

**9 Stambridge Street, Tarneit, Vic 3029**

**THE ELEET**

**Sold House**

Friday, 1 September 2023

9 Stambridge Street, Tarneit, Vic 3029

**Bedrooms: 4**

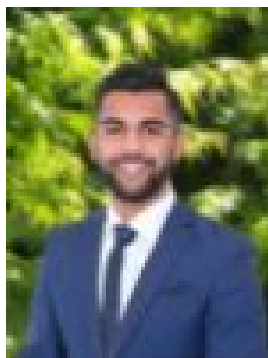
**Bathrooms: 2**

**Parkings: 2**

**Type: House**



Sachin Khera  
0433110100



Noel George  
0433980100

**\$705,100**

Sachin Khera & The Eleet Wyndham City proudly presents to you this Luxurious and Beautiful Henley Built home in the heart of Emerald Park Estate! This home is sure to enchant you from the moment you step inside the grand entrance, immaculately presented showcasing luxurious and contemporary living to perfection. With quality construction and outstanding blend of living, plus top of the range inclusions that cater superbly for today's lifestyle expectations, creating a highly desirable living environment and a home of distinction. This home will appeal to all families with its grand design that invites entertaining and easy living combined with its ultra-convenient location which enjoys seamless access to parklands. Whether you are looking for shopping and entertainment, schools and childcare, or a sports team to cheer for, you'll find everything within close proximity. This impressive one-of-a-kind architecturally designed home has been built to exacting standards with natural light flooding into the spacious interiors and superb entertaining zones. With high-end finishes throughout such as premium white plantation shutters, this contemporary home is in a class of its own. • A well-appointed and impeccable open plan kitchen with stainless steel appliances including glass splash-back, sparkling stainless-steel appliances and ample drawer and cupboard space, stone island waterfall bench-top/breakfast bar. To add a special touch to the kitchen with its very own Timber Framed - Glass door into its spacious Walk in Pantry, providing a special touch to this stunning abode. • The Grand Master Bedroom comprises of the contemporary walk-in robe which provides lots of hanging space, shelving, and drawers. The large ensuite features double vanity, extended shower and a toilet. All other bedrooms all comprising impressive robes. • Four generous bedrooms, two bathrooms, and a remote-controlled double garage. • The property is perfect for a family with fully front yard landscaping done and concrete driveway in the front and backyard making it low maintenance. • Features include ducted heating, alarm system, double car garage with internal access, contemporary features including neutral colour scheme, large windows, premium flooring, high ceilings throughout, quality fixtures and fittings including window furnishings, downlights, stone benches, low maintenance and much more. • Spacious interiors, and high end finishes are found throughout this modern home. • Perfectly located close to serene parkland and within proximity to shopping, dining, schools and childcare, public transport and easy freeway access, this exceptional property won't last long. **SNAPSHOT** • 900 mm Appliances • Premium Quality Doors and Windows • Spacious Bathrooms • Double Vanity in the master suite. • Down Lights throughout the living areas. • Ducted Heating with Zones • Walk in robes in Master Bedroom and Built in robes in all other bedrooms • Concrete Driveway • Security Systems with Alarms Don't miss out on this dream opportunity !!! YES Your Friendly Agent Back With Another Masterpiece please Call Sachin Khera on 0433 110 100 or Noel George on 0433 980 100 to arrange an inspection. **DISCLAIMER:** All stated dimensions are approximate only. Particulars given are for general information only and do not constitute any representation on the part of the vendor or agent. Please see the below link for an up-to-date copy of the Due Diligence Check List: <http://www.consumer.vic.gov.au/duediligencechecklist>