

# 9 Tintern Court, Frankston South, Vic 3199



## House For Sale

Tuesday, 23 January 2024

9 Tintern Court, Frankston South, Vic 3199

Bedrooms: 4

Bathrooms: 2

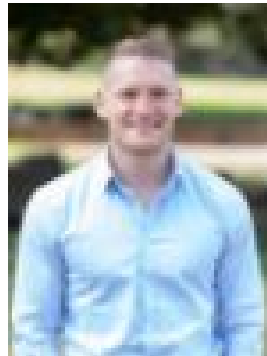
Parkings: 2

Area: 1572 m2

Type: House



Ashley Dowel  
0432465532



Michael McClure  
0403736761

**\$1,350,000 - \$1,450,000**

This stunning family home located within the prestigious and highly coveted Peninsula Gateway Estate is a must see! Positioned on a huge allotment of approximately 1572 sqm the home comprises of 4 good-sized bedrooms, multiple living areas and awesome outdoor entertaining with in-ground pool. Other features include:- Spacious master-suite with walk through robe and ensuite with double basin- Large main living area offers open fire place and adjoining formal dining - Well-appointed kitchen offering stainless steel appliances, 900mm gas stove, dishwasher & breakfast bar- Three further bedrooms all good-sized with built in robes and ceiling fans- Updated family bathroom with bathtub and separate toilet- Open plan lounge flows from the kitchen and dining area flooded with natural light - Gorgeous covered outdoor alfresco extends from the living domain offering built in bar and ample space for entertaining all year round.- Fully fenced solar heated inground pool- Fully fenced private yard features manicured gardens, children's playground, garden shed, cubby, gazebo and a multipurpose shed/studio- Double lock up garage- Reverse cycle air conditioning and ducted gas heating- 1572 sqm allotment approx Positioned in close proximity to the Frankston CBD as well as exclusive and reputable schools, parks, Frankston's Award winning beaches and Peninsula link. The location speaks for itself with fast easy access to Peninsula Link, Frankston town center and the beach, what more could you want for your family!