

9 Topographical Crescent, Greenvale, Vic 3059

Residential Land For Sale

Saturday, 2 December 2023



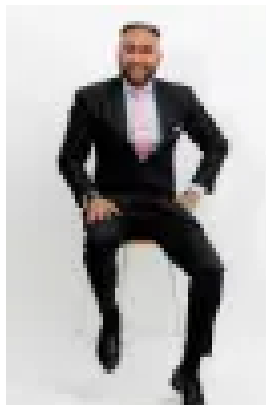
9 Topographical Crescent, Greenvale, Vic 3059

Area: 783 m2

Type: Residential Land



Amit Verma
0406184127



Dave Singh
0390779937

Build yur Dream !!

Now is the chance to secure an unoccupied allotment in the rapidly expanding area of Greenvale. Situated at an elevated elevation, this approximately 783 square meter block is an excellent opportunity to construct your dream house surrounded by other high-quality residences and with unobstructed views of Greenvale Reservoir and Melbourne City. This block is close to Roxburgh Park Train Station, the CBD, Greenvale Football Oval, Melbourne Airport, Greenvale/Roxburgh Park/Craigieburn Shopping Centers, medical offices, cafes, and schools, including Kolbe College and Aitken College. It is only about 28 kms from the Melbourne CBD and 12 kms from Melbourne Airport. Due diligence checklist - for home and residential property buyers - <http://www.consumer.vic.gov.au/duediligencechecklist>. This document has been prepared to assist solely in the marketing of this property. While all care has been taken to ensure the information provided herein is correct, we do not take responsibility for any inaccuracies. Accordingly all interested parties should make their own enquiries to verify the information.