

9 Woodridge Crescent, Doreen, Vic 3754

CHWYLA

House For Sale

Thursday, 13 June 2024

9 Woodridge Crescent, Doreen, Vic 3754

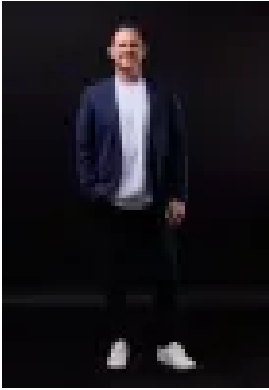
Bedrooms: 4

Bathrooms: 2

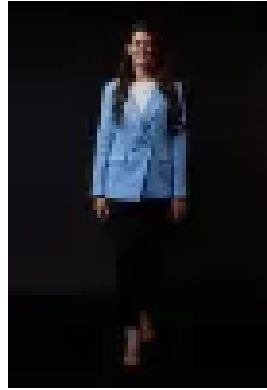
Parkings: 2

Area: 440 m2

Type: House



Paul Chwyla
0386009995



Stacy Richards
0386009995

\$750,000 - \$825,000

Make more of : 440m² block 4 Four bedrooms 2 Two bathrooms with stone benchtops 2 Two living areas 2 Study with built-in desk 2 Double garage 2 Front decking 2 Double door entrance 2 Fresh paint 2 Engineered floorboards 2 Feature lighting 2 Downlights 2 White plantation shutters 2 Stone kitchen benchtops 2 Window splashback 2 900mm appliances 2 Dishwasher 2 Considerable kitchen cabinetry 2 Butler's Pantry 2 Laundry with storage 2 Master with dual walk-in robes 2 Three bedrooms with built-in robes 2 Ducted vacuum 2 Ducted heating 2 Evaporative cooling 2 Covered alfresco with built-in seating 2 Sand pit 2 Low maintenance landscaping 2 Private backyard 2 Garden shed 2 Security system 2 Quiet street 2 220m to Towerhill Park 2 450m to Towerhill Road bus stop 2 550m into Plenty Gorge parkland and walking tracks 2 1.8km to Mernda Town Centre 2 2.5km to Riverstone shops 2 The initial appeal – Living this close to Towerhill Park playground [220m away, right at the end of your street], the bus stop [450m around the corner] and Mernda Town Centre shops and train station [1.8km down the road].The main attraction – Entrance way decking into double front doors, fresh paint, white plantation shutters, ducted vac and the luxury of two separate living areas and a study. Plus, stone benchtops, 900mm appliances, a window splashback, a roomy Butler's Pantry with heaps of storage.Outside, it's the oversized covered alfresco with built-in seating, and a sandpit and garden shed.Your journey here starts this Saturday.