

90 Schofields Farm Road, Schofields, NSW 2762

Sold House

Friday, 29 March 2024



90 Schofields Farm Road, Schofields, NSW 2762

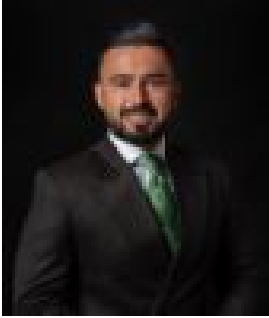
Bedrooms: 4

Bathrooms: 2

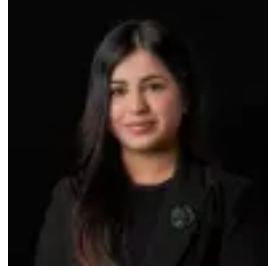
Parkings: 1

Area: 382 m2

Type: House



Amit Kumar
0288964336



Siya Sachdeva
0288964336

\$1,325,000

Situated in one of the sought-after neighbourhoods of Schofields, this remarkable property epitomises convenience and comfort, offering an unparalleled lifestyle for families seeking both space and convenience. The home is designed to cater to the needs of modern families, ensuring every inch of space is utilized efficiently. Within short proximity, you are just a 5-minute safe walk to Schofields Public School and a short walk to local shops and Schofields Train Station. Step inside and experience the seamless flow of this home's open-plan design, meticulously crafted to enhance both comfort and functionality. You are first greeted by a formal lounge which continues through to the combined kitchen, dining, and living areas, providing a hub for modern living. There is an additional living area that offers versatility to suit your family's needs, whether it's a cozy retreat for movie nights or a play area for the kids. Step through sliding doors to the undercover alfresco area, seamlessly blending indoor and outdoor living, with ample space for alfresco dining, weekend barbecues, and gatherings. Immerse yourself in the sleek kitchen featuring quality stainless steel appliances, stone benchtops, five burner gas cooktop and 900mm oven, tiled splashbacks, stylish lights, a waterfall island benchtop with an eat-in breakfast bar and ample storage space ensuring both style and functionality meet your every cooking need. Whether you're a culinary enthusiast or simply enjoy the pleasure of good food, this modern kitchen is sure to delight and inspire. Retreat upstairs to discover a haven of tranquillity, where four good-sized bedrooms await to provide ample space for rest. Two of these bedrooms feature built-in robes. The master bedroom boasts a walk-in wardrobe and a private ensuite bathroom, providing the perfect retreat at the end of a long day. Both bathrooms are also adorned with floor-to-ceiling tiles. Features you are sure to love:- LED lights in the common area- Ducted air conditioning - Multi-zone living areas- All bathrooms with floor-to-ceiling tiles- Rumpus room upstairs- Undercover alfresco and spacious backyard- Remote-controlled, lock-up garage with internal access Location Highlights:- 4 minutes drive to Tallawong Metro Station- 5 minutes drive to Schofields Train Station and Schofields Village- 12-minute walk to Schofields Public School- 9 minutes drive to Rouse Hill Town Centre- Short distance to daycare centres- Short distance to the local parks and more Disclaimer: All information contained herein is obtained from property owners or third-party sources which we believe are reliable. We have no reason to doubt its accuracy, however, we cannot guarantee it. All interested person/s should rely on their enquiries.