

901/36-44 John Street, Lidcombe, NSW 2141



Apartment For Sale

Monday, 11 December 2023

901/36-44 John Street, Lidcombe, NSW 2141

Bedrooms: 4

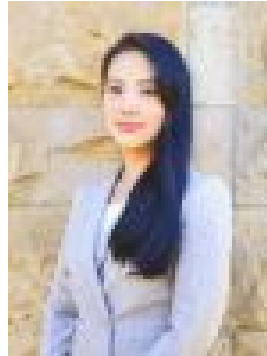
Bathrooms: 2

Parkings: 6

Type: Apartment



Asim Sam Kopuz
0452206848



Rebecca Zhang
0424242055

\$1,200,000 - \$1,300,000

Built to the highest standards and bathed in natural light, this spectacular architecturally designed 2 level penthouse has been crafted with comfort and luxury living in mind, setting the benchmark in Lidcombe. Skypoint towers is ideally located within walking distance to everything, with Lidcombe's shops, train station, eateries, schools and park only moments away. Features include:- Four good sized bedrooms with walk in robe to master bedroom and built to all- Master Bedroom with ensuite leading off to balcony with district views- Sleek timber look tiled flooring to living and dining areas, carpet to bedrooms- Stylish & chic kitchen with mirrored splashbacks, stone benchtop & stainless steel appliances- Downstairs offering spacious living & dining which walks onto a spacious balcony- Downstairs living & dining flowing out to a full width terrace perfect for entertaining- Walk up the solid timber flooring stairs onto a ex large living area with skylight allowing for an abundance of natural lighting- Upstairs living flowing out to a good sized balcony with suburb views- Skylight to living area upstairs ensuring abundance of natural light- Full width balcony off the bedrooms with views of Sydney Olympic Park & Sydney City Skyline- Ducted A/C system throughout- Convenient Carspace x 6 plus 3 storage cages within a secure basement- 200 meters to Railway Station, Schools and All Amenities in the Local Area

Approx area: Internal Living Space - Lower floor - 51sqm - Upper floor - 120sqm
Balconies - Total - 42 sqm
Car space - 14sqm X 6 = 85sqm
Storage Cage - 2sqm X 3 = 6sqm
Total - 303 sqm

• Water Rate: \$180/q
• Council Rate: \$344.50/q
• Strata Levy: \$1,651.83/q (Admin Fund: \$1,485.00, Capital Works Fund: \$166.83)*

Inspection: Saturdays, 11:00 - 11:30am or as advertised* For Sale: \$1,200,000 - \$1,300,000

NOTE: Every care has been taken to verify the accuracy of the information contained in this document, but no warranty (either express or implied) is given to Ray White Lidcombe or its agent as to the accuracy of the contents. Purchasers should conduct their own investigations into all matters relating to the purchase of the property.