

902/16-18 Seventh Avenue, Palm Beach, Qld 4221



Sold Apartment

Friday, 6 October 2023

902/16-18 Seventh Avenue, Palm Beach, Qld 4221

Bedrooms: 2

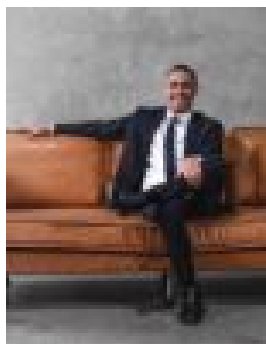
Bathrooms: 2

Parkings: 2

Type: Apartment



Mishka De Klerk
0416110656



Jared Malan
0420602936

\$1,075,000

Perfectly positioned in the heart of one of Gold Coast's most desirable suburbs, occupying a prime position on level 9. Apartment 902 in Sea Palm Beach captures the very best of coastal living. This stylish two bedroom plus study apartment was thoughtfully designed with open plan living opening to a north facing balcony with views to Burleigh Headlands and beyond. Positioned between two of Australia's most beautiful natural estuaries - Tallebudgera Creek and Currumbin Estuary, with restaurants, cafes and some of the world's best patrolled beaches only moments from your door. Sea Palm Beach has a reputation of being one of the suburbs most sought after residential buildings. Key features include: • 106 SQM - (96sqm internal & 10sqm balcony) • 2 secure car spaces, plus storage cage • Open plan layout, capturing stunning ocean views • Furniture optional • Large study • Modern kitchen equipped with Bosch appliances and induction cook top • Fully integrated dishwasher • Stone benchtops • Ducted air-conditioning • Enclosed laundry • Power and water to balcony • Secure video intercom access • Rental Appraisal: \$1100 - \$1200/pw (approx) • Built 2020, new building only 3 years old • Building facilities include elegant entry with secure video intercom, 2 x whisper-quiet lifts, exclusive residents' activity & relaxation retreat including heated lap pool, rec room, yoga deck and BBQ facilities • Pets - Allowed with Body Corporate approval Close to schools, shopping centres, M1 and the Gold Coast International Airport, this exceptional apartment offers an enviable beachside lifestyle in the heart of Palm Beach. We have in preparing this information used our best endeavours to ensure that the information contained herein is true and accurate, but accept no responsibility and disclaim all liability in respect of any errors, omissions, inaccuracies or misstatements that may occur. Prospective purchasers should make their own enquiries to verify the information contained herein. * denotes approximate measurement