

**904/10 Park Terrace, Bowden, SA 5007**

**HARRIS**

**Apartment For Rent**

Wednesday, 24 April 2024

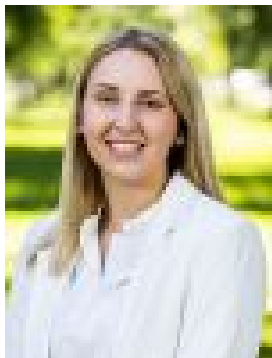
904/10 Park Terrace, Bowden, SA 5007

**Bedrooms: 2**

**Bathrooms: 2**

**Parkings: 1**

**Type: Apartment**



Alannah Williams

0434040874

## \$675 per week

\$675 per week Available: now This stylish, low maintenance apartment is the perfect city fringe base. Offering everything you could want in a lock-up-and-leave low maintenance new build, all you need to do is move in and enjoy. Features include:

- Open plan living area, with sliding doors to spacious balcony with views across parklands and to the hills
- Sleek modern kitchen with gas cooktop, dishwasher, crisp white cabinetry, and full-length pantry
- Main bedrooms with built-in robe and ensuite
- Additional bedroom with built-in robes
- Contemporary bathroom with floor to ceiling tiles and walk-in shower
- European laundry

More to love:

- Ultra-low maintenance allotment
- Allocated secure carpark with a lockable storage cage
- Secure access building with intercom system and communal lobby
- Split system reverse cycle air conditioning to living room
- Ceiling fans in bedrooms
- Timber look floors and plush carpets
- Downlighting throughout

Just a short stroll to public transportation, cafes, restaurants, Plant 4 Bowden and the Adelaide Entertainment Centre. Less than 5 kilometres to Adelaide CBD, North Adelaide Golf Course and Adelaide Oval – it's all at your doorstep. Pets: Not allowed Water Charges: Tenant to pay usage and supply Furniture: Unfurnished Exclusions: Nil

Would you like to view this property? Please click the button "contact the agent", register your interest and we will instantly respond. To avoid disappointment, we encourage you to register your interest so we can keep you informed during all stages of the leasing process. All information provided has been obtained from sources we believe to be accurate, however, we cannot guarantee the information is accurate and we accept no liability for any errors or omissions (including but not limited to a property's land size, floor plans and size, building age and condition) Interested parties should make their own enquiries and obtain their own legal advice.