

**906/83 Flemington Road, North Melbourne, Vic  
3051**



**Sold Apartment**

Tuesday, 3 October 2023

906/83 Flemington Road, North Melbourne, Vic 3051

**Bedrooms: 2**

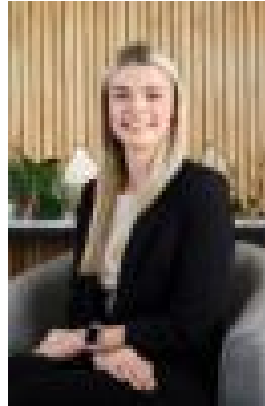
**Bathrooms: 1**

**Parkings: 1**

**Type: Apartment**



Peter Daicos  
0413757357



Jess Ibbott  
0402308910

**\$545,000**

Overflowing with stunning style and sensational 180-degree vistas in a light-laden ninth floor position, this two-bedroom apartment indulges a vivacious lifestyle at the city's edge. Paved with sleek oak floorboards and brushed in a cool, white colour palette, the home artfully mirrors the leafiness and natural light of its surrounds, while skilfully embracing modernity. A perfect panorama stretches over treetops to the city's skyscrapers and the Bolte Bridge, transforming from a soothing sight by day to simply dazzling by night. Creating a superb setting to relax and dine with friends against soaring double-glazed windows, the spacious open plan layout extends onto a wide balcony to indulge seamless indoor-outdoor enjoyment. The kitchen is dressed in chic stone benches and subway tiles, providing live induction cooking and an oven, plus a handy dish-drawer among plenty of storage. Each bedroom is generously sized with built-in mirrored robes, including a bright study nook to the main bedroom. Finished by a sleek, fully tiled bathroom with ample storage, and a large European laundry, the home is cocooned in luxury, providing split system air-conditioning, double roller blinds, video intercom and secure swipe entry, plus a secure basement carpark. Situated in the sought-after Nord complex, residents are treated to an onsite concierge, a secure mail room, and bike storage, while fostering a warm community atmosphere through a pavilion lounge with a kitchen and large-screen TV, stretching onto a fabulous rooftop terrace with barbecue facilities and communal veggie garden embraced by breathtaking horizon views. Situated among cosy cafés and tasty takeouts, and handy to supermarkets, hospitals, city-bound trams, and the sprawling recreation at Royal Park, this city-fringe pad has everything at its fingertips, within a leisurely walk to Errol Street's ritzy restaurants and bars, the Queen Victoria market, Melbourne University, and all the indulgences of the CBD. VIEWING TIMES are subject to cancellation/change 3 hours prior to the open for inspection. We advise that you check the listing on the day, to ensure that the property is still available prior to inspection to avoid disappointment.