

**907/12 Macleay Street, Potts Point, NSW 2011**



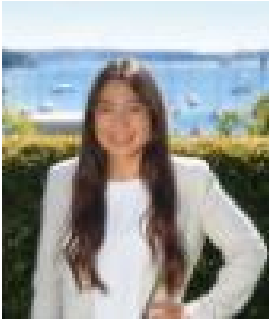
**Sold Studio**

Friday, 15 September 2023

907/12 Macleay Street, Potts Point, NSW 2011

**Bathrooms: 1**

**Type: Studio**



Tanja Kuehn  
0293319600

**\$480,000**

A perfect city pad in the landmark Macleay Regis building, this top floor studio enjoys level lift access and a bayside cameo over Elizabeth Bay's waterfront, yacht marina and harbourside Beare Park. One of only two studio apartments in the grand Art Deco building inspired by the Rockefeller apartments in New York, this tranquil haven captures sunshine and harbour breezes in its elevated rear setting. High ceilings and wide windows create a welcoming feeling in the immaculately maintained interiors with a modern kitchen, updated bathroom and living/sleeping area with air-con and built-in wardrobe. A rare offering in a prestigious company-title building with live-in caretaker, elegant timber-panelled foyer and shared residents' laundry. Enjoy a wonderfully convenient village lifestyle with buses at the door, 150m to Woolworths and footsteps to Challis Avenue's café/dining scene. Features • Top floor rear position, sunny east aspect • Cameo view of Elizabeth Bay & Beare Park • Living/sleeping area with built-ins & air-con • Modern kitchen, Gaggenau gas cooktop • Bathroom with shower and mirrored cabinet • Entry hall with built-in book & storage shelves • High ceilings, wide windows, cream carpet • Grand Art Deco building with elegant foyer • Restricted company-title building with 2 lifts • Live-in caretaker, shared residents' laundry • Footsteps to cafes, restaurants and shopping • Buses at door, 850m to Kings Cross train station