

919 The Horsley Drive, Smithfield, NSW 2164



Sold House

Wednesday, 13 March 2024

919 The Horsley Drive, Smithfield, NSW 2164

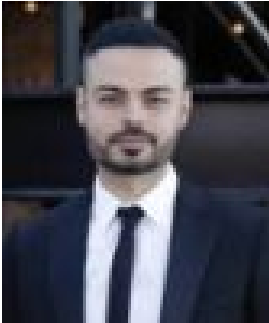
Bedrooms: 3

Bathrooms: 2

Parkings: 2

Area: 556 m2

Type: House



Martin Yokhana
0402874843



William Yousif
0461538975

\$895,000

Welcome to 919 The Horsley Drive in Smithfield! This charming 3-bedroom house now transacted OFF MARKET by Team Yokhana at Ray White Wetherill Park. Featuring a spacious layout, this property offers ample room for living and entertaining. The bedrooms are well-appointed and provide comfortable living spaces for you and your family. Located in a convenient area, this property is close to shops, schools, and public transportation, making it an ideal choice for those looking for a convenient and comfortable lifestyle. To ensure you don't miss out on any off market properties, please call Martin on 0402 874 843 or William on 0461 538 975.