

92 Matson Crescent, Miranda, NSW 2228



Sold House

Friday, 8 September 2023

92 Matson Crescent, Miranda, NSW 2228

Bedrooms: 5

Bathrooms: 4

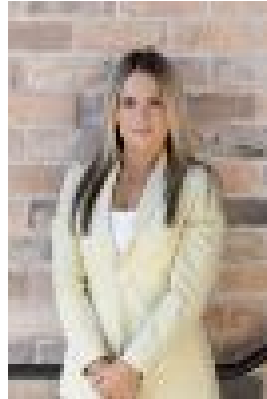
Parkings: 1

Area: 736 m2

Type: House



Gavin Ottaway
0415677440



Jo Siljanoski
0418452229

Contact agent

Nestled gracefully along the Yowie Bay waterways, this exceptional abode enjoys a privileged street to waterfront position. The property boasts an exquisite residence that embodies both privacy and natural beauty, offering an unparalleled family lifestyle. Offering an expansive alfresco entertaining area and glistening inground pool, enjoy evenings of enchanting sunsets over the bay, all whilst entertaining friends and family in your own private oasis. Discover the convenience of a short stroll to the idyllic Camelia Gardens, a true escape into nature's embrace. And for the water enthusiasts, the property's private access to Yowie Bay's waterways from your own backyard is a dream come true, providing a coastal family lifestyle that's second to none. This coastal-inspired retreat boasts five generously appointed bedrooms, ensuring ample space for every member of the family. The thoughtfully designed layout encompasses multiple living areas, providing room for both shared moments by the wood burning fire place as well as personal retreat zones. In addition, the multipurpose sub-floor retreat offers endless possibilities - from a home theatre to a dedicated hobby space. Superior quality meets unmatched convenience in this sought-after and tranquil locale within minutes to local schools, shops, transport. Embrace a life of leisure and exclusivity - your new coastal lifestyle awaits. - Generous proportions with light filled living and dining, vaulted ceilings, skylights and highline windows throughout- Well equipped kitchen with quality fittings and appliances including dual oven, integrated microwave and two dishwashers- Spacious interiors flow to a covered entertaining deck with built in bbq and bar fridge- Private Master retreat with walk-in wardrobe and luxury ensuite, highline windows and cathedral ceilings- Four additional bedrooms all with built in robes - Downstairs rumpus offers guest accommodation or a multipurpose hobby space- Fantastic backyard with tiered level lawns, landscaped gardens and playhouse- Sizeable in-ground swimming pool and sunlit timber deck overlooking the Pork Hacking waterways- Polished timber floorboards, carpeted bedrooms, downlights, ceiling fans, ducted Air Con throughout as well as Solar Panels- Separate workshop, as well as outdoor storage sheds, solar panels installed with battery for stored energy - Direct access to bay and close to local schools, shopping- 10 minute walk to Miranda Westfields, train station and transport facilities in the hub of the Sutherland Shire When looking at properties it's important to have confidence in how much you can borrow. As Ray White are partnered with Loan Market they can make this simple and easy for you. Should you wish to know your borrowing powers simply go to www.loanmarket.com.au/brokers/jason-wylie now and our Loan Market broker will be in touch.