

922 Barrenjoey Road, Palm Beach, NSW 2108



House For Sale

Tuesday, 23 January 2024

922 Barrenjoey Road, Palm Beach, NSW 2108

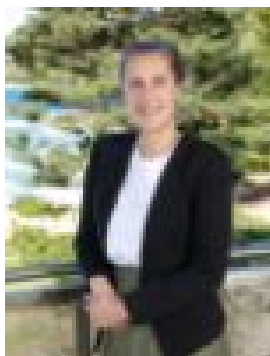
Bedrooms: 4

Bathrooms: 2

Parkings: 2

Area: 828 m2

Type: House



Tara Jaijee
0299742300



Noel Nicholson
0411884290

Contact Agent

Nestled in the heart of nature's paradise, with beautiful Pittwater views, you will find a peaceful retreat set among the treetops. Set over two levels, the ground floor opens to a welcoming hallway, three large bedrooms and a family bathroom. Upstairs, the large kitchen and dining room with fireplace connect to a wide part-covered deck overlooking Pittwater, with further living space consisting of an open plan living room, library and sunroom. A fourth bedroom and family bathroom complete this level. 'Treehouse' at Palm Beach provides plenty of room to host family and friends and enjoy the ever changing vista of Pittwater. Explore the beauty of Palm Beach, retreat back to your own private sanctuary and delight in the best of beachside living. + Impressive views over Pittwater to Stokes Point and Ku-ring-gai Chase National Park + Four bedrooms, two bathrooms, flexible floorplan + Open plan living, dining, sunroom and library/music area + Spacious light-filled kitchen with ample storage + Seamless indoor / outdoor living with two sunny decks and secluded rear gardens + Hardwood floors, bright interiors, modern kitchen and bathrooms + 828m² block, private double carport; shared driveway with one other property + Ready to enjoy as is, with further opportunity to enhance (STCA) + Across the road from the pathway to Thyra Reserve and the Pittwater foreshore + A short drive to beautiful beaches at Palm Beach, Whale Beach and Avalon Beach, as well as cafes, shopping and amenities + Located close to public transport, 15 mins from Mona Vale B-Line Express Bus to Sydney CBD. Inspect by appointment. Please contact Tara Jaijee on 0423 737 826 to register your interest.