

92a Nott Street, Port Melbourne, Vic 3207



Sold House

Wednesday, 4 October 2023

92a Nott Street, Port Melbourne, Vic 3207

Bedrooms: 4

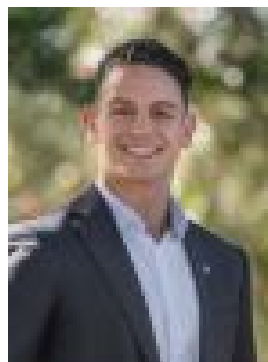
Bathrooms: 3

Parkings: 1

Type: House



Simon Gowling
0422234644



Marcus Varrasso
0414616575

\$2,260,000

A visionary contemporary design and spectacular urban convenience merge within this sleek, tri-level residence, showcasing an effortless indoor-outdoor entertainer's footprint on the doorstep of every inner-city and beachside attraction. Optimising privacy yet welcoming abundant natural light from a desirable northern aspect, soaring ceilings and high-end finishes provide exceptional areas for entertaining and daily life. Open plan living and dining on the ground floor reveal a striking gourmet kitchen, keeping things streamlined with integrated Miele appliances, a concealed walk-in pantry with a fridge cavity and stone benchtops that flow onto TV media storage. An integrated dining table is perfect for entertaining indoors, whilst sliding stacked doors open to a private alfresco terrace, enjoying the benefits of built-in seating and a BBQ. An expert floor plan continues upstairs to four generous bedrooms with built-in robes, including the main with its deluxe ensuite and built-in storage. A top-level lounge is ideal for the kids, opening to the expansive roof terrace with northern outlooks, bay glimpses and an electric louvre ceiling for all-weather enjoyment. Complete with a powder room, three full bathrooms with underfloor heating (including the main ensuite), a dedicated laundry, split system heating/AC, double glazing, loads of storage, and secure garage parking with internal access. Perfectly positioned just a stone's throw away from the vibrant cafes, restaurants, and bars of Bay Street, as well as the convenient light rail, the beach and excellent schools, this urban sanctuary offers an envy-inducing lifestyle that is genuinely unmatched.