

**93 Ada Avenue, Wahroonga, NSW 2076**

**Sold House**

Friday, 13 October 2023



APTAKER | & ASSOCIATES

93 Ada Avenue, Wahroonga, NSW 2076

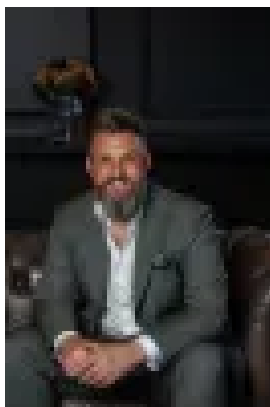
**Bedrooms: 4**

**Bathrooms: 3**

**Parkings: 2**

**Area: 2738 m2**

**Type: House**



Sash Aptaker  
1300263765



Sebastien Poujade  
0499233818

## Contact agent

Privately positioned and almost entirely obscured from the street, this low set family home offers spacious single level living on a remarkable 2,738sqm with a glorious natural forest backdrop. From the statement entryway with its sandstone feature wall and soaring palm trees to an expansive deck and sprawling gardens at the rear, the residence was constructed in the 1970s at a time when uniting indoors with outside was a desirable trend that remains a prerequisite for family living to the present day. Tightly held for almost 20 years, it provides a sanctuary of peace and seclusion just 5mins drive to Wahroonga village and rail, and with easy access to schools including Warrawee Public, Turramurra High, Knox and Abbotsleigh.-Rear entertainment deck spills down to terraced lawns and gardens -Oversized living area and formal dining with glass sliders to the deck-Modern kitchen has European appliances & butler's pantry/laundry-Up to four bedrooms or three with built-in robes plus spacious study-Master has walk-in robe and ensuite and opens directly to pool area -Updated main bathroom includes spa bath, separate powder room -Enclosed swimming pool/spa with gas heating, cabana and bathroom-Single garage plus undercover parking for a second car at front door