

93 Keifton Road, Woondum, Qld 4570



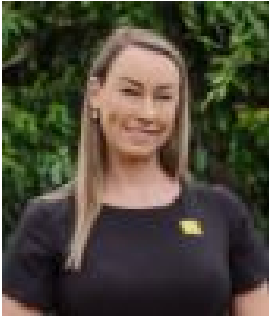
Residential Land For Sale

Sunday, 26 May 2024

93 Keifton Road, Woondum, Qld 4570

Area: 2 m2

Type: Residential Land



Aleisha Tonkin
0448028204

For Sale!

Calling all nature enthusiasts! Discover the ultimate haven in this sprawling 4.94-acre rural property, adorned with lush trees and tranquillity at every turn. Crafted in the 1980s, this resilient studio shed stands as a testament to enduring craftsmanship. Step inside to find a welcoming open-plan living space and kitchenette, tailor-made for entertaining guests. Laminate benchtops, a well-appointed pantry, and gas cooking facilities streamline meal preparation, while a charming dining area beckons for relaxed gatherings. Beat the heat with ceiling fans and air conditioning during the summer months. The property boasts a single high-clearance carport for convenient parking and partial fencing for added privacy and security. Outdoors, a covered patio invites you to unwind amidst the serene rural backdrop, where you can tend to the garden or simply bask in the natural beauty. Alongside the studio shed, discover a storage shed and a 6m x 3m shipping container, offering versatile spaces for storage or potential workshops. Plus, benefits from a 5,000-gallon water tank and an eco-friendly compost toilet. Embrace the great outdoors with a sprawling fire pit area and ample room for future developments like building your dream home or parking your caravan. This property seamlessly combines secluded retreat vibes with proximity to essential amenities, located just 10 minutes from Gympie's heart on the southern fringe of the region. Unlock the potential for a unique farm stay or hip camp experience on this picturesque property. With nearly 5 acres of sprawling land, there's ample space to create an unforgettable retreat for guests seeking an immersive rural getaway or weekender. Imagine hosting visitors amidst the tranquillity of nature, offering them a chance to disconnect from the hustle and bustle of daily life. Whether it's setting up cozy tent sites beneath the canopy of trees or curating memorable outdoor experiences like stargazing nights around the fire pit, the possibilities are as vast as the landscape itself. Embrace the opportunity to share the magic of rural living with others while generating additional income and fostering a sense of community. With its idyllic setting and versatile amenities, this property is primed to become a sought-after destination for those craving an authentic farm stay or hip camp adventure. Whether you seek a weekend escape, an artist's haven, or a canvas for building your sanctuary, this 4.94-acre oasis promises endless possibilities. Don't let this opportunity slip away - schedule a viewing today with Aleisha Tonkin from Ray White Gympie and embark on the rural lifestyle you've always craved!

Inspection Disclaimer: This property is not a public place and is someone's home, investment, or private property. Ray White will and has the right to properly qualify all potential purchasers who apply for an inspection and reserve all rights to refuse said inspection without explanation. Animals are not welcome at inspections whatsoever, to ensure the health and safety of our staff, along with the occupants within the home and the general public. Please note that under no circumstances, is anyone authorised to enter the property without the supervision of a Ray White representative.

Information Disclaimer: Although Ray White Gympie has provided all information related to this property to the best of our knowledge and resources, we shall not be held accountable or responsible for its accuracy. Ray White Gympie urges all buyers to conduct their own independent research and consult their own professionals to conduct due diligence before purchasing.