

93 Yating Avenue (Tallawong), Schofields, NSW 2762

House For Sale

Monday, 3 June 2024



93 Yating Avenue (Tallawong), Schofields, NSW 2762

Bedrooms: 4

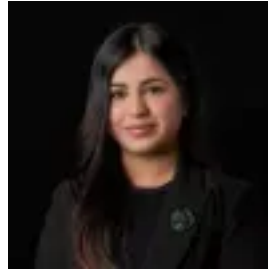
Bathrooms: 2

Parkings: 2

Type: House



Amit Kumar
0288964336



Siya Sachdeva
0288964336

Price Guide \$1,125,000

Situated in the highly sought-after neighbourhood of Schofields, this exceptional property embodies the essence of modern living, providing a perfect blend of comfort and convenience for families. Thoughtfully designed to cater to the needs of contemporary living, every inch of this home is utilised efficiently. Located just a 5-minute walk from Schofields Public School and within easy reach of local shops and Schofields Train Station, this residence ensures effortless access to all essential amenities. This move-in ready home features bespoke contemporary fittings and finishes, highlighted by a neutral colour palette and an abundance of natural light that permeates throughout. The home excels in offering open-plan living with a dynamic layout that effortlessly accommodates the entire family. The open-concept kitchen, living, and dining areas flow seamlessly through sliding doors to an outdoor alfresco area, complemented by a beautifully landscaped space ideal for entertaining. The contemporary kitchen is a chef's dream, featuring high-end inclusions such as stone benchtops, quality stainless steel appliances, five burner gas cooktop and 600mm oven, tiled splashbacks, waterfall island benchtop with an eat-in breakfast bar, a walk-in pantry and ample storage space. Upstairs, the accommodation comprises four generously sized bedrooms, each with built-in storage. The master suite is a true retreat, offering a private ensuite bathroom and a walk-in wardrobe. All bathrooms in the home are fitted with high-quality fixtures and finishes, as well as floor-to-ceiling tiles, ensuring a touch of luxury in every corner. This remarkable property not only offers a superb lifestyle but also promises a haven of comfort and convenience in one of Schofields' most desirable locations. Features you are sure to love:- LED lights throughout the home- Ducted air conditioning - Open plan living and dining area- Tiled flooring downstairs and floorboards upstairs - Rumpus room upstairs- All bathrooms with floor to ceiling tiles- Undercover alfresco with kitchen sink, ample storage and ceiling fan and backyard- Remote controlled, double lock up garage with internal access. Location highlights:- 5-minute drive to Tallawong Metro Station- 5-minute drive to Schofields Train Station and Schofields Village- 15-minute walk to Schofields Public School- 9-minute drive to Rouse Hill Town Centre- Short distance to daycare centres- Short distance to the local park. Disclaimer: All information contained herein is obtained from property owners or third-party sources which we believe are reliable. We have no reason to doubt its accuracy, however, we cannot guarantee it. All interested person/s should rely on their enquiries.