

**930 Empty Road, Sunbury, Vic 3429**

LCR O 

**Sold Townhouse**

Monday, 14 August 2023

930 Empty Road, Sunbury, Vic 3429

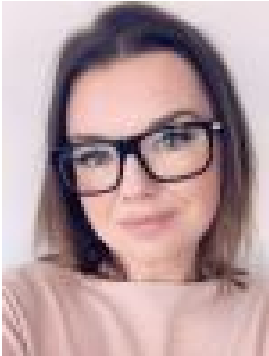
**Bedrooms: 4**

**Bathrooms: 2**

**Parkings: 2**

**Area: 194 m2**

**Type: Townhouse**



Amelia Price

0424111360

**\$619,000**

Are you wanting to build a new home to receive all of the amazing benefits (stamp duty savings, brand new, low maintenance, new home warranty and affordable) but don't want to wait years for your land to title and your home to be built? This land is TITLED and ready for building to commence! ENQUIRE NOW TO FIND OUT ABOUT OUR CURRENT PROMO! Echo Townhomes by Glenvill's latest release of architecturally designed townhomes is located in one of the best waterfront locations at Kingsfield Estate. The thriving and established suburb of Sunbury offers all the privileges of urban life an idyllic country setting. Beyond a rich heritage of sprawling country estates vineyards and homesteads dating back to the 1880's, Sunbury has an unparalleled sense of local life. Across friendly green neighbourhoods, residents wake up to a morning birdsong before heading into town for a freshly brewed coffee. Commutes to work and wider travel are stress free with the airport 16 minutes away and Sunbury train station and freeway links just 7 minutes from Kingsfield. A long list of 15 established, local government and independent schools and 9 future schools, provide every option to nurture the next generation. Visit Kingsfield's website <https://www.kingsfieldsunbury.com.au/> to learn more about what this spectacular estate has to offer. Sustainable outcomes underpin every element of Kingsfield's masterplan and Echo's 7 star energy rated townhomes blend seamlessly into this vision. With standard inclusions like solar panels with battery and double glazed windows, you will immediately feel the benefits of your energy efficient home. Not only do these homes boast an impressive façade, the floorplan design is enviable. With four bedrooms, a walk in pantry, full laundry, two living areas and a balcony, you will forget you are in a townhome. Echo Townhomes by Glenvill are proud to deliver this outstanding opportunity to be part of the highly sought after Kingsfield Estate in Sunbury. Perfect for first homebuyers, downsizers and savvy investors! Each home features its own individual land title and is completely independently built and therefore has no body corporate fees applicable. These homes are fixed price with full turnkey inclusions allowing you to have a stress free and enjoyable build journey. Check out some of Echo Townhomes by Glenvill's Luxury Standard Inclusions:

- Fixed Price Package including Site Costs
- Double Glazed Windows throughout
- 4kw Solar Panel System with Battery Storage
- Architectural Façade
- Fisher & Paykel 900mm Induction Cooktop
- Fisher & Paykel 900mm Integrated Rangehood
- Haier 600mm Oven
- Haier Dishwasher
- 40mm Stone Benchtop to Kitchen
- Mirror Splashback to Kitchen
- 20mm Stone Benchtops to Bathroom and Ensuite
- Tiled Shower Base to Showers
- Floor to Ceiling Tiles to Bathroom and Ensuite
- Black Tapware and Bathroom Accessories throughout
- Mirror Shaving Cabinets to Bathroom and Ensuite
- 20mm Stone to Laundry Cabinetry
- Timber Laminate Flooring to Living Areas
- Quality Carpet to Bedrooms and Stairs
- Reverse Cycle Split System to Living and Master Bedroom
- Blinds and Flyscreens
- Fencing
- Front and Rear Landscaping
- Exposed Aggregate Driveway
- Clothesline
- Letterbox and more....

Do you need assistance with finance? Conveyancing? We are able to help you with every part of your property purchase! Please contact Amelia for more information