

9307/177-219 Mitchell Road, Erskineville, NSW 2043

BresicWhitney

Sold Apartment

Wednesday, 16 August 2023

9307/177-219 Mitchell Road, Erskineville, NSW 2043

Bedrooms: 1

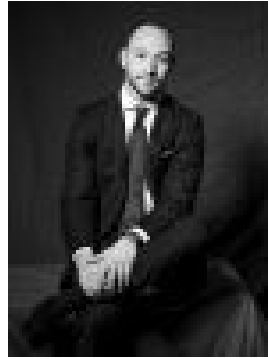
Bathrooms: 1

Parkings: 1

Type: Apartment



Arden Savio
0477266810



Patrick O'Brien
0439025188

\$770,000

In the popular Sydney Park Village, this apartment has clean modern finishes and a premier position with elevated outlooks over forecourt and gardens. With a unique corner design and twin balconies, it's full of north sunlight while enjoying resort-style swimming pool, gym and tennis courts, close to Sydney Park, the train station and local dining. Free Strata Report online at bw.com.au Highlights* Well-regarded Sydney Park Village complex* Open living flows to balconies, NE outlooks* Modern kitchen, gas cooking & dishwasher* Loads of storage & full internal laundry* Bedroom with built-in robe, bath with tub* Secure basement car space, visitor parking* Resort-style surrounds w/ central gardens* In/outdoor pool, tennis courts, gymnasium* Opp. Sydney Park, near cafés/Woolworths* Walk to both Erskineville/St Peters trains