

**95/61 Supple Road, Waterloo Corner, SA 5110**



**Retirement Living For Sale**

Monday, 30 October 2023

95/61 Supple Road, Waterloo Corner, SA 5110

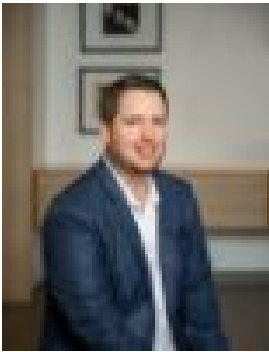
**Bedrooms: 3**

**Bathrooms: 1**

**Parkings: 2**

**Area: 148 m2**

**Type: Retirement  
Living**



Steve Spurling

0421571682

**\$250,000 - \$270,000**

Nestled in a quiet pocket of The Palms is the perfect home for those aged over 50 years who want to downsize without compromising space. The home is packed full of features that include but are not limited to:- 3 spacious bedrooms all fitted with built-in robes for storage.- Large living room with plenty of room for the family to spread out.- Dining room leading into the spacious kitchen with gas cooking, dishwasher and ample cupboard and bench space.- Sparkling bathroom with both shower and bath.- Gas heating and ducted evaporative air conditioning for your year round comfort.- Double length carport and lock up tool shed for the handyman.- Paved entertaining area at the rear of the home, the perfect area for a bbq with family and friends.All of this and more is located in the Palms Residential Park.The Palms Residential Park is you're affordable over 50's residential village. With homes for the budget-minded and for those who appreciate real value without compromising quality, you will be delighted with what The Palms offers. Here you have the freedom to personalize and customize your home to your tastes. The Palms is a residential village and with extensive recreational facilities, there's "something for everyone"Nestled on the outskirts of Virginia, The Palms has developed a beautiful, secure, peaceful environment infused with a lively community spirit.For more information on this beautiful home, The Palms Residential Park or for a Private inspection of the homes available and tour of the Palms give Steve a Call today.RLA 232366