

95-97 Mount Irvine Road, Mount Wilson, NSW 2786 

Sold House

Wednesday, 27 March 2024

95-97 Mount Irvine Road, Mount Wilson, NSW 2786

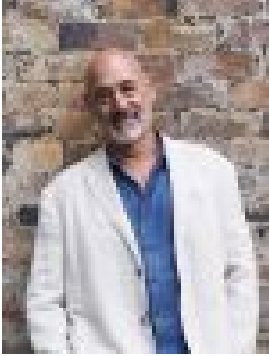
Bedrooms: 2

Bathrooms: 2

Parkings: 2

Area: 2 m2

Type: House



Lewis Thyer
0430043806

Contact agent

Nestled on the view side of Mount Irvine Road in the sought after Mount Wilson is 'Pine Lodge' Surprisingly, with all the grand homes and gardens in the Mount Wilson area there are very few properties with views and Pine Lodge has one of the loveliest and most intimate views of the wilderness I have seen for a long time. The main living area opens via huge bi-fold doors to a generous north facing entertaining deck that seems to float in the trees, the vista to the wilderness is perfectly framed by tall stands of exotic trees giving the feeling of being perched in a European forest. It is quite wonderful, being cool and shaded in the summer and drenched in winter sun when you most need it. This main living room also has a massive basalt clad open fireplace with a spectacular mantle featuring incredible detail that has to be seen to be believed. This main living also adjoins the kitchen which has another floor to ceiling window overlooking the same view. The second living area has a similar fireplace and more double doors that open to the southern gardens and another huge north facing window plus bespoke stained glass pieces that are incredibly beautiful. Off the main living room is the most intimate dining room, perfect for a gathering of friends for those raucous dinner parties that we all know and love, imagine cocktails on the spacious deck, then moving through to that cosy dining room for a delicious meal, and afterwards take your pick of two living paces for after dinner chats, both with crackling open fireplaces! This home is the perfect get away, there are two bedrooms, both with their own bathrooms and the main bedroom has an office/walk in robe as well. The gardens are established, so no major maintenance headaches there and there is a regular gardener who does the hard work so all you need to do is arrive and enjoy. There are bonuses in the compact size and gardens too, as an owner who wants to be consumed with upkeep in such a spectacular location? • Gas Central Heating • Views to Wollangambe Wilderness • Manageable house and gardens • Electric Entry Gates