

95 Guye Court, Gherang, Vic 3240



House For Sale

Saturday, 11 May 2024

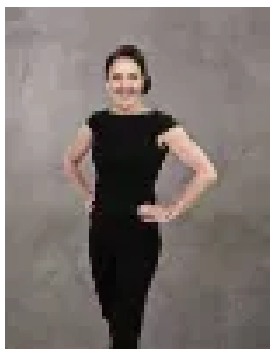
95 Guye Court, Gherang, Vic 3240

Bedrooms: 4

Bathrooms: 2

Parkings: 2

Type: House



Michelle Winckle
0352411488



Sophie Spowart
0478957905

\$1,800,000 - \$1,980,000

This home has it all, incredibly unique and in a quiet location in the heart of Gherang, this is the ideal family abode. This solid Mediterranean style home is sure to impress, with ample living and bedrooms for a large family. Downstairs the open plan living/kitchen and family room is spacious and leads through to a larger family living room complete with an open fire place and overlooks the pool and outside entertaining. Five spacious bedrooms, 3 upstairs and 2 downstairs are all generous in size and ideal for a growing family. Outside all the necessities of country life has been thought of, excellent equine facilities with 4 outdoor horse paddocks, riding paddock, 2 horse shelters, wash bay and a tack room. Farm life wouldn't be complete without a chicken enclosure, separate play area for the little ones, outdoor entertaining and living of course with a pool. The shedding is fantastic on the property and is rare to find. There's an enormous double garage with a massive attic above with a large space that could be used as a playroom, work from home office or art studio. There is another 4 car garage and a single horse float garage. 117,000 litres of water combine with a number of dams providing ample water. Set on over 29 acres this property has a fantastic mix of bush and useable land. Compete with a bush track on the property for motorbike or horse riding, all cut out and ready to use. Adding to all this is another original cottage at the front of the property, ideal for using as an office, or art studio or kids retreat, these 2 rooms and a living space complete this all-round property. The Gherang lifestyle is one of peace and serenity, fantastic bird life, wildlife at your back door, the Otway state forest within a short walk/motorbike ride/horse ride. A number of Surf Coast beaches are all within 15-20 mins and only 15 mins to Moriac/Winchelsea. 30 mins to both Colac and Geelong so perfectly positioned to make commuting a breeze. It's rare to find homes of this size with so much on offer, this is a true gem. Inspection is sure to impress! *All information about the property has been provided to Hayeswinckle by third parties. Hayeswinckle has not verified the information and does not warrant its accuracy or completeness. Parties should make and rely on their own enquiries in relation to this property.