

95 Opal Drive, Leopold, Vic 3224

Sold Residential Land

Friday, 14 June 2024



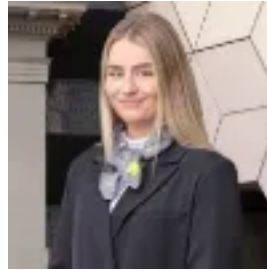
95 Opal Drive, Leopold, Vic 3224

Area: 448 m2

Type: Residential Land



George Politis
0352411331



Mollie Chandler
0475843029

\$341,400

Situated in a sought-after locale, this 448 m² plot of land presents numerous opportunities for crafting your ideal residence. Benefit from the convenience of nearby amenities, including easy access to shops and a short drive to Gateway Plaza Leopold, Bellarine Secondary College, Leopold Primary, and various other excellent facilities. Embrace the natural beauty of the Bellarine Peninsula that envelops this property. Don't wait to seize the chance to build the lifestyle you imagine on this exceptional piece of real estate.