

961 Pacific Highway, Berowra, NSW, 2081

Sold House

Thursday, 11 May 2023

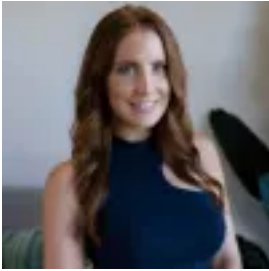
961 Pacific Highway, Berowra, NSW, 2081

Bedrooms: 3

Bathrooms: 1

Parkings: 3

Type: House



Ellie Dangerfield
0243260500

Potential and Convenience

Resting peacefully on a flat, subdividable (STCA) 1039m² block, perfect for both first home buyers and astute investors alike, is this warm, welcoming, 3-bedroom family home.

The home itself beams coastal cottage vibes for days. Comprised of 3 generous bedrooms, galley style kitchen, multiple living spaces and large, covered outdoor entertaining that flows seamlessly into the lush, green rear yard. Everything is here to create memories that last a lifetime.

The detached garage makes storing all the toys a breeze, while the carport gives the bonus of ample covered parking.

Cleverly set toward the front of the block to offer ample scope for future development, yet private and tranquil at the same time, this home is located only a short walk to the train station and a 3-minute drive to the M1, giving immediate access to both Sydney and the Central Coast, which means the potential on offer here is matched only by the convenience.

C

Disclaimer

The information contained herein has been provided by our Principal and third parties, which we merely pass on without any representation or warranty given, intended or implied by us as to its correctness and with no liability accepted by us in this regard. You must rely upon your own inquiries as to its accuracy or otherwise.