

97-99 Long View Road, Croydon South, Vic 3136



Sold House

Saturday, 21 October 2023

97-99 Long View Road, Croydon South, Vic 3136

Bedrooms: 5

Bathrooms: 2

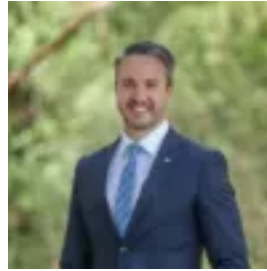
Parkings: 4

Area: 1625 m2

Type: House



Sharyn de Vries
0398706211



Joseph Corsi
0398706211

\$1,600,000

Set high on the allotment with established gardens bursting with seasonal colour, embrace the tranquility of the peaceful tree-lined street with its large secluded blocks and all the conveniences close at hand. Thoughtfully renovated, this picture-perfect weatherboard home is warm and welcoming and celebrates open plan cohesion. A wide entrance provides an inviting introduction and leads to an open plan kitchen, dining and family room boasting eye catching views of the Dandenong Ranges. This generous living area, with atmospheric open fireplace, creates instant warmth wrapping around a light filled kitchen with island bench, gas cooktop, dishwasher, and ample cabinetry. Connecting the family room with the loungeroom is an inviting merbau deck, creating an amazing space for entertaining. The low maintenance secure back garden incorporates an array of fruit trees and a charming chicken coop. Down a wide central hallway are four generously sized and robed bedrooms plus a home office/5th bedroom, a renovated bathroom with double vanity and a separate powder room. At the end of the passage, down four steps, is a spacious light filled master retreat appointed with a walk-in robe with a full height window, a newly renovated ensuite, and a private balcony providing a beautiful space for parents to enjoy the garden vistas. Bordering Ringwood East, in a tightly held area, this home is in easy walking distance to Tintern Grammar, Tinternvale PS, Ringwood East train station, Railway Avenue shops/cafes and nearby Eastfield Shops. Close access to Luther College and Yarra Valley Grammar. Nearby to Cheong and Eastfield Parklands with trails to Town Park, Aquahub and Croydon Main Street Shops. Minutes' drive to Eastland Shopping Centre, the Eastern Freeway and Eastlink. Highly appealing with its neutral colour scheme, featuring: 2.7 metres high ceilings, Tassie Oak floorboards, French doors, triple zoned ducted heating, split system, fully renovated laundry with excellent storage and outside entry, stylish blinds, recently restored roof, exceptional under-home storage and a double remote garage with workshop area plus extra car accommodation or boat/trailer storage bay.