

97 Beech Drive, Suffolk Park, NSW 2481



Sold House

Saturday, 18 May 2024

97 Beech Drive, Suffolk Park, NSW 2481

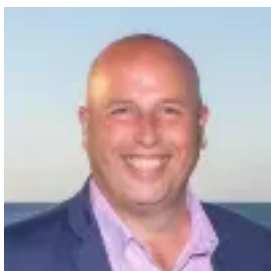
Bedrooms: 3

Bathrooms: 2

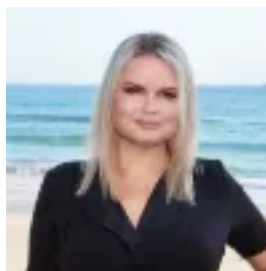
Parkings: 2

Area: 754 m2

Type: House



Damien Smith
0266856222



April Nicolson
0266856222

Contact agent

Welcome to 97 Beech Drive Suffolk Park. This immaculate 3 bedroom, 2 bathroom family home is the perfect blend of convenience & coastal living. With a spacious land area of 754 sqm, neighbours on only one side and surrounded by reserve, this property offers plenty of room for outdoor entertaining and relaxation. The open plan living and dining area has high ceilings and is flooded with natural light, creating a bright and airy space for you to enjoy. The kitchen is the heart of the home equipped with modern appliances and ample storage space, making meal preparation a breeze. Step outside onto the large, covered deck and take in the beautiful surroundings. The backyard is the perfect spot for hosting summer BBQs or simply relaxing in the sunshine. With a mix of lush lawn and beautifully manicured gardens, this outdoor space is a true oasis. Located in the sought-after, family friendly Baywood Chase of Suffolk Park, this property is close to all amenities, including a shop, the tavern, skate park and the beach. Don't miss out on the opportunity to make this house your home.