

98 Balmain Road, Mickleham, Vic 3064



House For Sale

Saturday, 4 May 2024

98 Balmain Road, Mickleham, Vic 3064

Bedrooms: 4

Bathrooms: 2

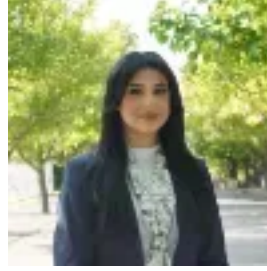
Parkings: 2

Area: 448 m2

Type: House



Steph Shepherdson
0393082277



Brandice Rizkalla
0393082277

\$780,000 - \$820,000

Inspiring house design and a stunning fusion of space and light with genuine wow factor, this stylish entertainer puts the focus on making everyday life easier. Surrounding its occupants with quality finishes and warm tones, the high-end four-bedder (could be a five-bedder) with multiple living areas and sun-soaked outdoor living is walking distance to parkland, Merrifield Recreation Reserve and Mickleham Secondary College plus a short commute to Coles Merrifield. The Carlisle Homes' Matisse 29 layout is super-impressive, boasting high ceilings, lavish floor coverings and large expanses of glass. The palatial primary bedroom suite features an oversized walk-in robe and a hotel-like ensuite, including a separate bath, double-length shower, separate toilet as well as a his and hers vanity. Three spacious additional bedrooms all come with built-in robes and share another deluxe bathroom, including a separate bath and shower and a separate toilet. An elegant formal living room is followed by this home's showpiece, your upscaled kitchen/living/dining zone with wonderful outdoor connections. The gourmet kitchen boasts a dining island, smooth stone surfaces, custom cabinetry, reflective backsplash, premium appliances and a walk-in pantry. Large families will appreciate the versatility of an expansive home office located at the front of the home that could be used as a fifth bedroom as well as a bright and airy rumpus room located at the rear of the residence. Set against quality synthetic lawn and landscaped perimeter gardens, sliding doors roll back from two sides to reveal an exquisite under-the-roofline alfresco and sumptuous timber deck. Other highlights include a family-sized laundry, powder room, ducted heating and evaporative cooling, excellent house storage, plantation shutters, double glazing, 20 solar panels, four security cameras plus a double remote garage with internal and rear yard access. Instantly appealing from street level with the perfect floorplan for today and tomorrow, come home to the good life where luxury lives forever. **DISCLAIMER** The vendor, agent and agency in preparing this information have used our best endeavours to ensure that the information contained therein is true and accurate but accept no responsibility and disclaim all liability in respect of any errors, inaccuracies or misstatements contained herein. Prospective purchasers should make their own inquiries to verify the information contained herein.