

99 Burns Road, Picnic Point, NSW 2213

AUSREALTY

Duplex/Semi-detached For Sale

Wednesday, 12 June 2024

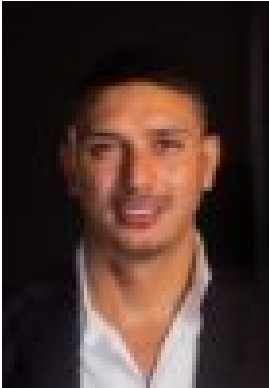
99 Burns Road, Picnic Point, NSW 2213

Bedrooms: 4

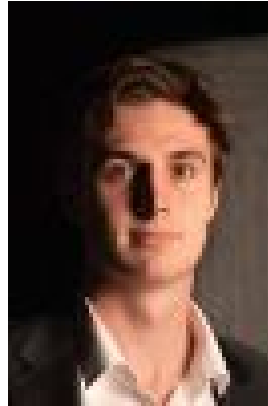
Bathrooms: 2

Parkings: 3

Type: Duplex/Semi-detached



Karim Alrefai
0290718668



Darcy Gregory
0426714006

Offers Invited

"Living here has been a dream come true. The outdoor entertaining area and pool have provided countless memorable moments with family and friends. The location is second to none with parks and great schools nearby." - Owner- Discover the charm and elegance of this beautifully designed family home in the heart of Picnic Point. This home offers a perfect blend of modern convenience and timeless style, ideal for families seeking both comfort and luxury- Features four generously sized bedrooms, each with built-in wardrobes. The master bedroom boasts a private ensuite and a covered balcony, offering a serene retreat- Enjoy the luxury of two well-appointed bathrooms, including a sleek ensuite in the master bedroom. Each bathroom is designed with contemporary finishes and ample space- The kitchen is equipped with modern appliances, ample storage, and a stylish design making it perfect for both casual meals and entertaining- Open-plan living and dining areas with access to an outdoor covered entertaining area, designed to capture natural light, creating a warm and inviting atmosphere. Plus an additional retreat from the lounge with access to a covered verandah from the front house- Step outside to the covered entertaining area, complete with an alfresco space and overlooking the sparkling heated swimming pool. This backyard oasis is perfect for summer barbecues and relaxing by the pool- This home includes a double lock-up garage with internal access, off-street parking, solar panels, shed from the backyard, ample storage throughout, and modern conveniences such as air conditionin- Located in a sought-after area, this property is close to reputable schools such as Picnic Point Public & High School, local shops, and beautiful parks including Lambeth Reserve. Excellent transport links ensure easy access to the wider Sydney area
Water Rate: \$247 per quarter
Council Rate: \$405 per quarter