

99 Sapphire Chase, Wellard, WA 6170

House For Rent

Wednesday, 27 September 2023



99 Sapphire Chase, Wellard, WA 6170

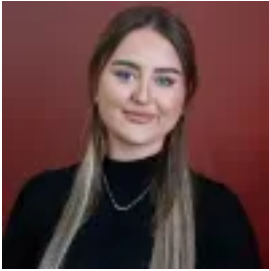
Bedrooms: 3

Bathrooms: 2

Parkings: 3

Area: 264 m2

Type: House



Gemma Eldrid

0894394405

\$550 per week

Located in Wellard's Emerald Park Private Estate this well designed three bedroom, two bathroom home is ready and waiting for you as tenant is breaking lease and is available approximately Early-Mid May 2024. Lovely neutral decor throughout.[APPLICATIONS WILL BE PROCESSED ONCE YOU HAVE ATTENDED A VIEWING]Property Features Include:3 Bedrooms all with robes2 BathroomsOpen plan kitchen/dining/family roomSplit System AirconditionerKitchen - stone benches, 600mm Gas cooktop, Oven & Rangehood.Separate Laundry with Linen CupboardFully enclosed paved rear yard with front and back low maintenance gardensProperty located close to schools, parks and approximately two minute drive to Moritmer road (freeway access) and public transport. Strict NO PET Policy.Please email gemma@encoreproperty.com.au to arrange a private viewing or phone 9439 4405. All online applications will be processed once you have attended a viewing.