

9A Melbourne Street, Oxley Park, NSW 2760



Flat For Rent

Tuesday, 9 April 2024

9A Melbourne Street, Oxley Park, NSW 2760

Bedrooms: 2

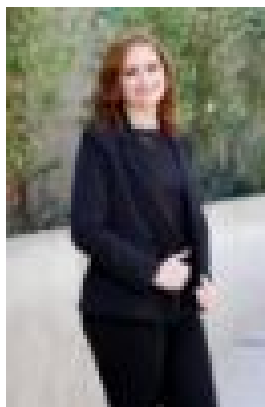
Bathrooms: 1

Parkings: 1

Type: Flat



Mikayla Wood
(02)47323333



Samantha Drury
(02)47323333

\$400 Per Week

Ray White Nepean Group is proud to present this beautiful 2 bedroom, 1 bathroom home! Located in a great position within close proximity to Bus Stops, M7 Westlink, M4 Motorway, Oxley park Public School, St Marys shopping precinct. This granny flat has two great sized bedrooms with spacious built-in wardrobes. A large bathroom with modern trimmings and a fenced off backyard that is perfect if you are looking for something low maintenance. A modern kitchen with a spacious open plan living area with wooden floors and downlights.