

9A Susan Court, Mount Waverley, Vic 3149

buxton

Sold Townhouse

Wednesday, 6 September 2023

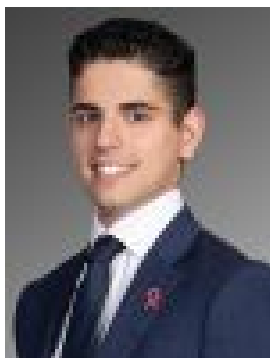
9A Susan Court, Mount Waverley, Vic 3149

Bedrooms: 4

Bathrooms: 3

Parkings: 2

Type: Townhouse



Peter Serafino
0398096488



Zack Song
0430390209

\$1,880,000

Infusing state-of-the-art finishes with the warmth of beautiful natural light, this architecturally designed streetfront sensation is immersed in luxury. Sublime with quality herringbone flooring, exclusive light fittings and custom joinery, this superbly spacious home enjoys a stunning sitting room with towering void, large downstairs main bedroom (WIR & designer ensuite) and outdoor entertaining. The hub of the home is truly spectacular, with vast open-plan living/dining showcasing a gas log fireplace and high-end kitchen lavishly appointed with striking stone surfaces, Miele appliances, island bench and Butler's kitchen. Upstairs, abundant space has been maximised to perfection with 3 additional robed bedrooms (2nd main bedroom with sleek twin ensuite and WIR), bespoke bathroom with Toto Washlet toilet, huge retreat and open study. Enjoying an interior design theme consistent throughout, this unrivalled residence is complete with ducted heating, refrigerated AC, automated blinds, alarm, keypad entry, powder room, under stair storage, auto entry gate, single garage and off street car space. Alluring from a location perspective within the MWSC and Essex Heights Primary catchments, close to Mt Waverley Village and train station, PLC, Wesley College and Deakin University.*Please Note* Buxton Real Estate may refuse to provide further information about the property should you prefer not to disclose your Full Contact Details including Phone Number. Photo id required upon entering the property.