

**A02/109 Salisbury Road, Stanmore, NSW 2048**



**Apartment For Sale**

Friday, 3 May 2024

A02/109 Salisbury Road, Stanmore, NSW 2048

**Bedrooms: 2**

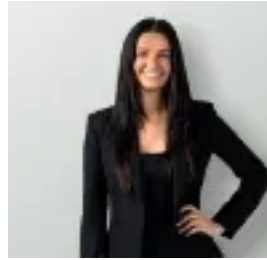
**Bathrooms: 2**

**Parkings: 1**

**Type: Apartment**



Blake Lowry  
0478750750



Grace Valentine  
0481117534

## **Auction**

A northeast corner aspect, stylish interiors and direct private entry from Durham Lane combine to make this two-bedroom apartment a great choice for lifestyle buyers. One of only 10 in a secure near-new development near Bain Playground and Whiteley Reserve, the apartment offers an uplifting sense of space and light, includes two courtyard areas and comes complete with exclusive-use parking. Less than 10mins walk to Stanmore village shops, cafes and rail, it presents an ideal private home or investment in one of the inner west's most desirable locations.- Direct gated entry to entertainers' northeast courtyard and deck- Bright open living and dining including a dedicated study space- Modern kitchen features s/steel Miele appliances and gas cooking - Two bedrooms with built-ins, main has ensuite and own courtyard- Stylish bathroom, European laundry, ducted r/c air conditioning - Undercover exclusive-use car space with access from the laneway- Proximity to transport, Newtown's RPA, Sydney University and CBD