

140 Braddocks Road, Werombi, NSW 2570



Acreage For Sale

Wednesday, 19 June 2024

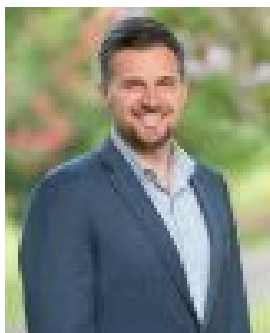
140 Braddocks Road, Werombi, NSW 2570

Bedrooms: 1

Bathrooms: 1

Area: 17 m2

Type: Acreage



John Pierobon
0291315777

Offers over \$2,500,000

A Grand opportunity to purchase over 42 acres in the picturesque leafy area of Werombi on the edge of suburban Sydney in the historic Wollondilly LGA of the Macarthur region, be it to live, work, play or invest this is a solid land bank for your future! Enter this wonderful elevated hideaway via a private bush lined driveway almost like your own enchanted forest providing complete privacy and charm to your rural escape. Once you meander your way through there is a substantial elevated clearing on the ridgeline where there are many vantage points to take in the valley and mountain views. There is also the bonus of a partially completed single level home in need of a new owner to bring it to completion and make this dream abode become a reality! Within close proximity of Silverdale Village, Cobbitty, Camden, Narellan, Oran Park etc and approx 25km to the Western Sydney International Airport only strengthens the investment potential of this property and location. Make the tree change and reconnect with nature in this unique offering with so many possibilities!