

28 McLean Drive, Bellingen, NSW 2454

cardow + partners

Acreage For Sale

Tuesday, 25 June 2024

28 McLean Drive, Bellingen, NSW 2454

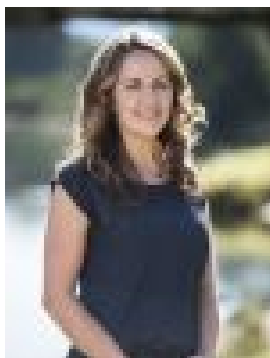
Bedrooms: 4

Bathrooms: 2

Parkings: 4

Area: 1 m2

Type: Acreage



Tennille Cardow
0458218563

\$1.65m

This amazing 2.5-acre (1.03ha) property is only 2.6km from the centre of Bellingden. It offers stunning mountain views, warm winter sun, and cool summer breezes. The family home has 4 bedrooms, 2 bathrooms, 3 toilets, an open plan living area, and lovely covered verandahs. The architect-designed home is solar passive, with eco glass to regulate temperature and 6kw of solar power. The land is mostly cleared and suitable for fruit trees, animals, or children, providing a level of peace and serenity rarely found so close to Bellingden. Upon arrival, you'll step from the front verandah onto timber floors that extend throughout the home. The spacious living room offers lovely views over the rolling hills to the mountains. The kitchen features ample bench space, an oversized walk-in pantry, plenty of cupboards, a dishwasher, and a double sink. This area seamlessly flows to the outdoor covered deck, perfect for entertaining or relaxing with beautiful valley and mountain views. The main bedroom opens onto the verandah, and has his & hers walk-in robes, a generous ensuite bathroom with a shower, vanity, and toilet. Bedroom 2 has timber floors and large built in robes, bedrooms 3 and 4 (office) enjoy mountain views to the north. The main bathroom offers a timber vanity and mirror, a separate bath and shower, and floor-to-ceiling tiles. The laundry has plenty of space with a built-in cupboard and direct access to the back verandah. Outside, the Colorbond shed plus workshop is located away from the main house and comes with a concrete floor and power. There are plenty of native trees, with the owners planting around 350-400. If you're a gardener, you'll be pleased to know you have a great start, and the entire property enjoys excellent drainage. This property has been finished to a high standard and is reluctantly being sold by the owners who built it as their forever home. Although it feels "miles from anywhere," it's actually just a 4-minute drive or 20-minute walk (2.6km) to the centre of Bellingden.