

Address available on request, Heidelberg, Vic 3084



Sold Townhouse

Thursday, 16 November 2023

Address available on request, Heidelberg, Vic 3084

Bedrooms: 3

Bathrooms: 2

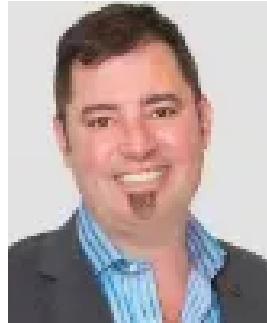
Parkings: 2

Area: 204 m2

Type: Townhouse



Irini Carter
0414895596



ASH CARTER
0434462515

Contact agent

This townhouse is a boutique designer allotment in a prestigious part of Heidelberg. Positioned on an elevated hill, with views towards the Dandenongs, it's only a 400m walk to the picturesque parkland & recreation ovals of Possum Hollow. The project located in Heidelberg and is part of a stunning 6 townhouse project, this home is the last one left & features 3.2m internal ceilings, the best appliances, and quality materials. The developers have been mastering their craft over a number of years, and this project will be their best yet! Heidelberg is located only 12 - 13kms from the CBD, with sort after public & private primary & secondary schools, terrific shopping nearby at Warringal Shopping Centre & Northland Shopping Centre, with La Trobe University within 5kms & RMIT further north up the road, the location boasts access to creeks, park lands, shopping & education, then to create the trifecta, Austin Hospital is also within 2.5kms, making it an employment cluster, with Health, Education & Facilities all nearby. Whether you are looking to live in this amazing townhouse, or invest for future growth, they are a smart buy for anyone astute enough to act soon & not miss out. Prices in the area are increasing due to the access to facilities & the city. As you drive the streets you can't help but be impressed, with very affluent neighbouring suburbs of Ivanhoe & Eaglemont improving the desirability & the prices in the greater Heidelberg area.