

Address available on request, Longwarry, Vic 3816

Residential Land For Sale

Thursday, 13 June 2024



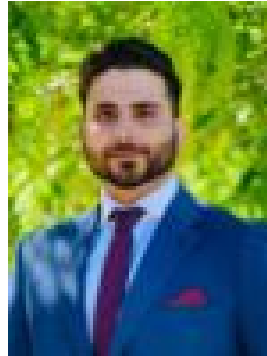
Address available on request, Longwarry, Vic 3816

Area: 3500 m2

Type: Residential Land



Bobbi Brown



Muhammad Waqas
0423109099

Contact Agent

Victoria Land Agents proudly represent an Prime Development Potential On the Market For The First Time in Longwarry This property in the rapidly growing suburb of Longwarry, South East Melbourne, is available for the first time on the market. Situated on a generous land parcel with 2 Street frontages, the existing dwelling is ideal for diverse applications, including childcare, a medical centre, aged care, or NDIS services (STCA). Featuring 3 bedrooms and 2 bathrooms, the property offers a flexible layout, modern amenities, ample parking, and accessibility features. Located directly opposite a local primary school, it provides excellent potential for both residential and commercial uses (STCA) in a flourishing community. Contact Details: Muhammad Waqas: 0422 424 371 | Waqas@victorialandagents.com.au Bobbi Brown: 0420 710 005 | Bobbi@victorialandagents.com.au Disclaimer: Dimensions are approximate and provided for informational purposes only and do not constitute a formal representation. Interested parties are advised to conduct their due diligence before submitting any proposals. For the latest Due Diligence Checklist, please visit: <http://www.consumer.vic.gov.au/duediligencechecklist>