

**Address available on request, Maudsland, Qld 4210**



## House For Sale

Saturday, 9 December 2023

Address available on request, Maudsland, Qld 4210

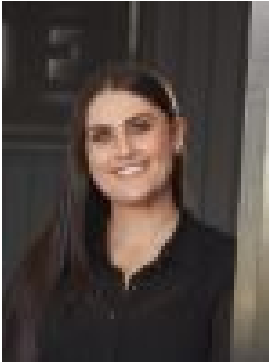
**Bedrooms: 4**

**Bathrooms: 2**

**Parkings: 2**

**Area: 469 m2**

**Type: House**



Sarah Maurer

**\$986,830**

Welcome to your new home, a spacious 4-bedroom, 2-bathroom that offers open plan living along with a media room for your enjoyment. Prepare to be captivated by the stunning kitchen, complete with walk-in pantry. The high ceilings create an airy ambiance, while the ducted Daikin zoned air-conditioning ensures your comfort throughout. Our commitment to providing a complete living experience doesn't stop at the design and features of the home. We offer a true move-in and start living package, allowing you to settle into your new dream home effortlessly. And with no cost for internal changes, you have the freedom to customize your home to align with your unique vision.

- HIA Award Winning Builder
- Custom designs & True Turnkey packages
- Quality design and quality relationships built on trust and support
- Over 20 years industry experience

Here's why our quality homes stand out:- True Full Turn-Key Fixed Price Package (QBCC/HIA contracts)- 6m x 3m Inground Swimming Pool- 2570mm high ceilings, 1200mm wide wooden front door- Security alarm system with sensors and keypad- 7-star energy rating- Ceiling speakers to lounge/kitchen/alfresco - Daikin ducted air conditioning reverse cycle with 6 zones to suit house design with digital display panel. - 900mm appliances including undermount rangehood, cooktop & oven (your choice of gas/electric)- Fully integrated dishwasher & built in bins, Plumbing to fridge to cavity- Roller blinds & flyscreens to all windows and doors- 20mm quality stone bench tops throughout the kitchen, bathrooms and laundry- Soft close cabinetry throughout- Tiled niches in showers, Heated towel rail, Rainwater showerhead in ensuite - Your choice of vinyl or tiled flooring- Quality plush carpet with premium underlay - Mirrored Robes, shelves and bank of 4 draws in all bedrooms - Tiled Porch & Alfresco- Ceiling fans to all bedrooms, living & alfresco- Generous electrical incl LED Downlights- Colourbond roof, fascia & gutters- Exposed aggregate driveway- Full landscape and fencing package, Mailbox & clothesline - Garage storage with vinyl sliding doors and shelves

Monterea Ripley's Green Space Master Plan will potentially dedicate more than 22 acres to green open space that will host a range of recreational amenities including open turfed areas for kick and play, an adventure playground, BBQ shelters and water foundations, sheltered picnic areas, walkways, multi-sports court, and public amenities to be enjoyed by its prestige residents. Within a few minutes' drive to well-established Ipswich and Springfield, Ripley is well connected by centenary highway for your travel to Brisbane, Brisbane Airport, Sunshine Coast, Gold Coast and Toowoomba.

\*\*Images shown are for illustrative purposes and may not represent the final product. Subject to site inspection and land developer's approval.