

Address available on request, Moolap, Vic 3224

Residential Land For Sale

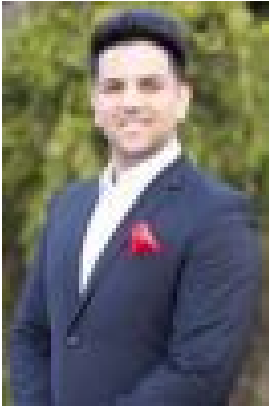
Thursday, 13 June 2024



Address available on request, Moolap, Vic 3224

Area: 10 m2

Type: Residential Land



Karan Sharma



Veenu Pathak
0433823270

Contact Agent

KEY Realty proudly presents an approximately 25-acre prime parcel of land in the Moolap Investigation Area. One of the best property blocks in Moolap, with countless prospects for future development. (STCA).Key features:

- 3 Bedroom house with solar panels
- Approximately 8 km to Geelong Waterfront Eastern Beach
- Approximately 7 km to Geelong Hospital
- Some small sheds
- Close to Bellarine Highway
- Close to an existing residential area, it's only a short drive to Bellarine Village Shopping Centre, Leopold Gateway Plaza, Newcomb Central, medical facilities, sports fields, primary schools, and kindergartens

Let's get started your new journey, that you want the ease of city living combined with the tranquilly of a rural existence. This is an incredible chance to showcase enormous potential for the future. Please get in touch with us to organise a private inspection. Karan Sharma: 0432 500 718 Veenu Pathak: 0433 823 270

DISCLAIMER: All stated dimensions, photos and information are approximate only and only for reference purposes. Particulars given are for general information only and do not constitute any representation on the part of the vendor or agent.