

Address available on request, Newborough, Vic 3825

VIA  
VICTORIA LAND AGENTS

## Residential Land For Sale

Monday, 17 June 2024

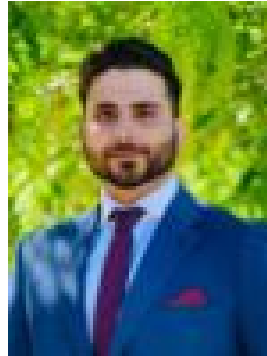
Address available on request, Newborough, Vic 3825

Area: 1 m2

Type: Residential Land



Bobbi Brown



Muhammad Waqas  
0423109099

## Contact Agent

Victoria Land Agents proudly represent an exceptional 4-acre property in the prestigious Lake Narracan Precinct Structure Plan (PSP) area, featuring a stunning double-storey home and significant development potential. This residence, situated next to a scenic golf course, offers a blend of modern elegance and rural charm. The spacious interior includes an open-plan living area, a gourmet kitchen, and luxurious bedrooms, all designed to maximise comfort and style. The property's expansive grounds provide breathtaking views and ample outdoor space, ideal for both leisure and future development. Positioned just a 5-minute walk from Lake Narracan and the upcoming town centre, this property combines tranquillity with convenience. Its prime location within the PSP offers immediate access to recreational activities and future urban amenities, enhancing both lifestyle and investment value. Whether you're seeking a luxurious family home or a strategic development opportunity, this unique estate promises an unparalleled blend of present enjoyment and future potential. Schedule your viewing today to experience this extraordinary offering firsthand. For further details or to request a Vendor Statement or Contract of Sale, please get in touch with our exclusively appointed agents: • Muhammad Waqas 0422 424 371 Waqas@victorialandagents.com.au • Bobbi Brown 0420 710 005 Bobbi@victorialandagents.com.au Take advantage of securing significant property, which is perfect for future growth and success. Interested parties are encouraged to conduct their due diligence before submitting any proposals. Disclaimer: Dimensions are approximate, provided for informational purposes only, and do not constitute a formal representation. For the latest Due Diligence Checklist, please visit: <http://www.consumer.vic.gov.au/duediligencechecklist>.