

1/3 Roberta Street, Jolimont, WA 6014

Apartment For Sale

Sunday, 23 June 2024

1/3 Roberta Street, Jolimont, WA 6014

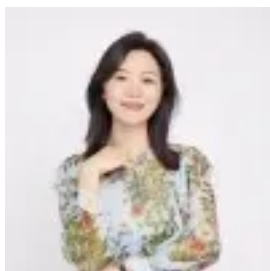
Bedrooms: 1

Bathrooms: 1

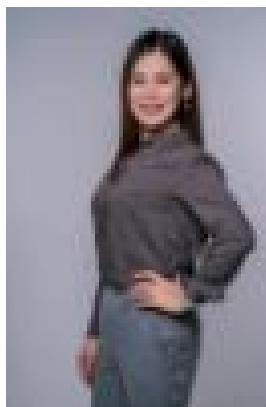
Parkings: 1

Area: 52 m2

Type: Apartment



Shuai Pei
0893552757



Alice Yuan
0434245020

Offers from \$550,000

Nestled among tall trees with serene views of leafy green parks and gardens, this stunning apartment is ideally situated in the sought-after suburb of Jolimont. Offering a safe and relaxed atmosphere, it invites you to immerse yourself in the vibrant local community. Featuring a premium architectural design with superior craftsmanship throughout, this outstanding home includes a spacious balcony that seamlessly extends the dining and living areas. Appealing to discerning buyers seeking a boutique living experience, including young professionals, singles or couples.

Key Features:-Built in 2019 within a boutique gated group of nine apartments-Reverse cycle split system air conditioners-Tranquil tree-lined street and parkland views-Ensuite bathroom with spacious shower recess

Parkview offers a tranquil lifestyle just minutes away from all that Perth has to offer. Enjoy nearby parks, entertainment precincts, shopping, hospitals, and prestigious schools, with easy access to public transport to Fremantle or the City.

Nearby Amenities:Cliff Sadlier VC Memorial Park and Jersey Street Nature Playground at doorstep250m to Jolimont Primary School400m to Daglish Train Station900m to King Edward Memorial Hospital900m to Lords Recreation Centre1.1km to Wembley Supa IGA1.2km to Subiaco Farmers Market1.6km to Shenton College3.6km to Kings Park5.2km to Perth CBD6.6km to City Beach

Highly Regarded Schools Nearby:Jolimont Primary School (within catchment)Shenton College (within catchment)Bob Hawke CollegePerth Modern

Outgoings:Council Rates: \$3,386 per annumWater Rates: \$1,150 per annumStrata Levies: \$771 per quarter

To arrange a viewing, please contact Rachel on 0413 337 733 or Alice on 0434 245 020.