

# 103/2-4 Cambridge St, Epping, NSW 2121

## Apartment For Sale

Wednesday, 16 August 2023

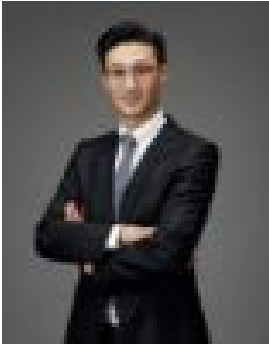
103/2-4 Cambridge St, Epping, NSW 2121

**Bedrooms: 1**

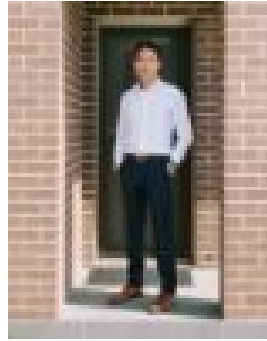
**Bathrooms: 1**

**Parkings: 1**

**Type: Apartment**



Allen Zhang  
0292829000



Felix Alim  
0402878615

## **Modern 1 Bed with Courtyard. Contact Agent.**

Welcome to Epica. A mix of low density modern homes in a desirable Epping locale, nestled between the bustling village of Eastwood and the retail hub of Macquarie Park. Be in Chatswood and Norwest business park in just 15 minutes. Paramatta in 18 minutes & Sydney CBD in under 30 minutes. Epica is a classy icon of elegance. The gorgeous bedrooms, spacious balconies, tasteful kitchens and well-designed bathrooms are embellished by spectacular views, including the city skyline. - 100 meters to Epping train and metro interchange - 4 units only for each floor - Sun-drenched apartments - Great natural ventilation - Spacious internal and external area - Mostly corner location apartments with panoramic view - Excellency in educational resources of all levels - Within a few minutes drive of the Sydney Orbital roadways connecting to Greater Sydney and M2 North-Western highways. - Excellency in superior architectural design Epica takes you onto an enjoyable journey with the benefits of integrated living with many facilities all in one place. - Transportation - Employment - Education - Shopping Centre Everything you need is here. <https://www.epicaepping.com.au/> Call Felix at 0402 878 615 to know more details. **SHOWROOM LOCATION** Level 2/16-18 Cambridge Road, Epping NSW 2121 **Disclaimer:** Prices are subject to availability and change at the developer's discretion. The images are intended to serve as a guide only and all interested parties should make and rely on their own inquiries in determining the accuracy of the information. All information displayed is current at the time of issue, but may change at any time.