

10303/2A Figtree Dr, Sydney Olympic Park, NSW 2127



Apartment For Sale

Wednesday, 19 June 2024

10303/2A Figtree Dr, Sydney Olympic Park, NSW 2127

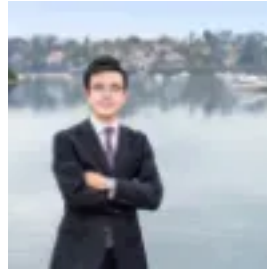
Bedrooms: 1

Bathrooms: 1

Type: Apartment



Angell Yang
0434259336



Kalaney Che
0422273658

Just Listed! Contact Agent

This 3th-floor apartment epitomizes a prestigious lifestyle within 'The Pavilions' by Mirvac, Building A. A superior development renowned for its high quality and unparalleled refinement. The living area is bathed in abundant natural light from its northwest aspect. This residence offers an elevated living experience. Situated just a leisurely stroll away from Olympic Village IGA, shops, cafes, and dining options, as well as convenient access to trains connecting to the CBD. Additionally, it's within walking distance to Accor Stadium and other sporting facilities.

Features:-The layout is striking, featuring an open-plan living and dining area that seamlessly connects to the balcony.-Sunny aspect balcony with tree-lined street view-Contemporary kitchen with massive pantry, stone bench top and Miele appliances-Dedicated study nook, providing a quiet space for work or study.-Well-appointed bright bedroom leading to the balcony, floor-to-ceiling sliding doors, built-in wardrobes-Sleek bathroom offer ample storage space within the vanities.-Internal laundry with dryer included-Ducted A/C, video intercom access and NBN connectivity-Allocated one storage cage in the basement-Residents have exclusive access to a range of amenities including a gym, BBQ area, community room, and garden for their enjoyment and leisure-Conveniently located in the central of SOP council area, walk to station, Olympic Aquatic Centre, recreational entertainment and shops.-Future light rail next to this building-An ideal opportunity for first-home buyers, downsizers, or investors. High rental income and growing area.Don't wait to call our friendly team now for more information.*Disclaimer: The description and property features in this advertisement may not accurately reflect the current features of the property including the building facilities