

**105/18 College Avenue, Shellharbour City Centre,  
NSW 2529**



## **Apartment For Sale**

Wednesday, 31 January 2024

105/18 College Avenue, Shellharbour City Centre, NSW 2529

**Bedrooms: 2**

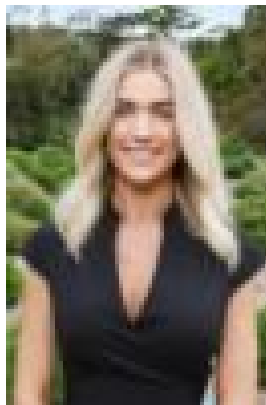
**Bathrooms: 1**

**Parkings: 1**

**Type: Apartment**



Fady Saad  
0422050392



Sarah Weise  
0447155901

## Price Guide \$699,000

Centrally located within a stone's throw of Stockland Shopping Centre, this new low-maintenance apartment is brimming with lifestyle appeal. Occupying a north / east aspect, this light-filled residence features a wraparound balcony with escarpment + lake views, two well-proportioned bedrooms with built-in wardrobes, ducted air conditioning, high ceilings and a secure car space with storage. When you venture outside, you'll find many everyday conveniences, including shops, a cinema, restaurants, cafes and gyms right at your doorstep. The advantageous location means you'll also be within easy distance of pristine beaches, Shell Cove Marina and a convenient 20-minute drive to Wollongong City and 90 minutes to Sydney CBD. Features • Modern kitchen with gas cooktop, stone benches • N/E facing aspect, escarpment + lake views • Ducted a/c, wraparound balcony • Common rooftop gardens, pet-friendly • New complex, undercover car space with storage