

**108P/191 Powlett Street, East Melbourne, Vic 3002**



## **Apartment For Sale**

Tuesday, 2 July 2024

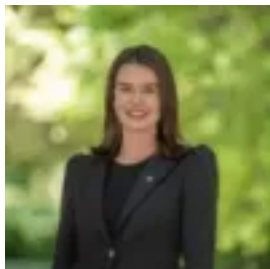
108P/191 Powlett Street, East Melbourne, Vic 3002

**Bedrooms: 2**

**Bathrooms: 2**

**Parkings: 1**

**Type: Apartment**



Caitlin White

0394283333

## **\$800,000 - \$850,000**

A bespoke lifestyle prize on the site of the historic Victoria Brewery, this split level residence promises turn key comfort and unmatched convenience in the most exclusive of inner Melbourne enclaves. Spanning two superb storeys, a wonderfully bright interior enjoys elevated views across leafy surrounds. Concrete ceilings and pillars pay homage to the building's industrial heritage, smartly complemented by stainless steel kitchen surfaces and a solid steel/Tasmanian oak staircase. A substantial living/dining area affords ample room to relax, entertain, and work from home, while a pair of sizeable, upper bedrooms are accompanied by impressive robe storage, a tidy central bathroom, and master ensuite with bath and shower. With on site amenities spanning a gym, heated pool, and roof terrace alongside a wine bar, café, and supermarket, additional highlights to the home include heating/cooling, premium kitchen appliances, an intercom, European laundry, storeroom, and basement car space. Steps from lively Smith, Brunswick, and Gertrude Streets, trains and trams, hospitals, and the storied MCG precinct, with picturesque Fitzroy and Treasury Gardens revealing the city's vibrant East End.