

**1101/2 Kingfisher Street, Lidcombe, NSW, 2141**

**Apartment For Sale**

Monday, 5 August 2024



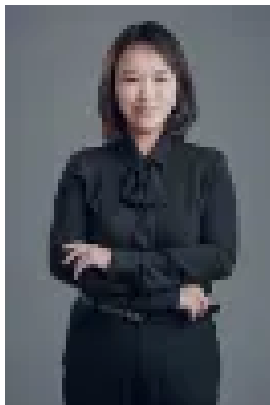
1101/2 Kingfisher Street, Lidcombe, NSW, 2141

**Bedrooms: 2**

**Bathrooms: 2**

**Parkings: 1**

**Type: Apartment**



Robyn (Lingyun) Bao  
1800789000

## **Tranquil Luxury: Serene 2-Bedroom Apartment with Water Views**

Experience the epitome of urban living in this stunning 2-bedroom apartment nestled within Sydney Olympic Park. Positioned on a corner block, this residence offers a coveted blend of sunshine and tranquil.

Upon entry, you'll be bathed in natural light pouring through expansive windows, creating a bright, airy atmosphere. With its strategic orientation, the apartment enjoys North West facing aspects, ensuring ample sunlight throughout the day.

A standout feature is the mesmerizing water view, visible from the living room and balcony, adding a serene backdrop to everyday life.

### **Property Features:**

- Sunlit with North & South facing aspects, offering leafy district views
- Spacious north facing balcony, perfect for entertaining
- Contemporary kitchen with premium European appliances and ducted out rangehood
- Luxurious fittings by Parisi, frameless shower screen, and full-height feature wall
- Ducted air conditioning and built-in study nook
- High ceilings (2.8m) enhancing natural light
- Expansive balcony ideal for guests
- Elegant foyer for a welcoming entrance
- Common outdoor amenities include BBQ area, entertaining space, and landscaped garden

### **Location Highlights:**

- 650m to Olympic Park train station and future Sydney Metro West station
- Nearby Stage 2 Parramatta Light Rail stop (proposed)
- Quick 2-minute drive to M4 Motorway
- Lidcombe Shopping Centre just 1.4km away
- 15km to Sydney CBD

This apartment epitomizes modern living with its blend of sophistication, convenience, and breathtaking views.