

**1108/2 Chester Street, Epping, NSW 2121**



**Apartment For Rent**

Monday, 1 July 2024

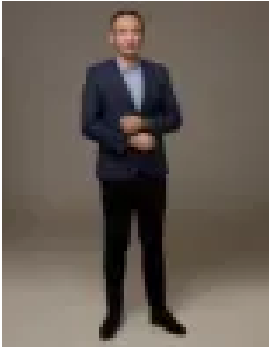
1108/2 Chester Street, Epping, NSW 2121

**Bedrooms: 2**

**Bathrooms: 2**

**Parkings: 1**

**Type: Apartment**



Tim Hao Li

0283226838

**\$800 pw**

A development that is strategically located in one of Sydney's fastest growing residential areas - Epping. Only 5 min walk to Epping train Station and shopping area! Only 1 stop train or 6 min drive to the Macquarie Shopping Centre, a super large shopping centre around the area. PROPERTY FEATURES: \* 2 Bedroom, 2 Bathroom, 1 Car Space \* North Facing, Great View! \* Close proximity to public transports \* 5 min WALK to Epping Station for Sydney Trains services \* Shopping at doorstep \* Education \* 5 min drive to Macquarie University \* 6 min drive to Macquarie Shopping Centre APARTMENT FEATURES: - Generous bedroom with built-in wardrobes - Luxurious bathroom - Well-equipped kitchen with European stainless steel stove and integrated dishwasher - Internal laundry with dryer - Air-conditioning system - Security intercom system and secure building access