

12/519 New South Head Road, Double Bay, NSW, 2028

PPD REALESTATE

Apartment For Sale

Thursday, 5 September 2024

12/519 New South Head Road, Double Bay, NSW, 2028

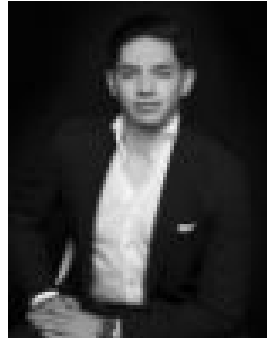
Bedrooms: 1

Bathrooms: 1

Type: Apartment



Sean Poche
0283551136



Nate Chacon
0283551143

A Creatively Reimagined Art Deco Hideaway, Quiet Seclusion In The Heart Of The Bay

An eclectic blend of Art Deco architecture and creative contemporary design brings an upbeat vibe to this boutique apartment on the top floor of a classic Art Deco block of 12. Framed by tranquil leafy surrounds giving it the ambiance of a treetop hideaway, the oversized one-bedroom apartment captures wide views out over Double Bay to the city skyline from its peaceful rear-of-block position. A spacious 70sqm approx layout offers the proportions of a two-bedroom apartment while a private corner position affords a sense of sanctuary in an unbeatable location an easy stroll down to the heart of the village and just 300m to Redleaf Pool. Quality fixtures and finishes, artisan finishes and authentic Art Deco details create a welcoming homely feel away from the hustle and bustle but just 500m to Kiaora Lane's eat street and 600m to the ferry for a relaxed trip into the city. Tucked away in a private enclave with alternate access via Crane Place off Fairfax Road, 'Florida' is a well-maintained security block of 12 just 150m to the bus to the city and beaches.

- ? Whisper-quiet top floor setting
- ? Oversized 70sqm approx internally
- ? Renovated with an artistic touch
- ? Hardwood floors and high ceilings
- ? Large bedroom with built-in robes
- ? Spacious living room, Deco fireplace
- ? Stylish dining with a leafy outlook
- ? Views over Double Bay to the city
- ? Chef's grade eat-in gas kitchen
- ? Oak benchtops and dining island
- ? Miele dishwasher, European laundry
- ? Classic Art Deco bathroom with a bath
- ? One common wall, affordable levies
- ? Stroll to harbour pools and beaches
- ? 500m to Kiaora Lane's dining scene
- ? 600m to the wharf and commuter ferry
- ? A perfect first home or top investment