

1206/486 Pacific Highway, St Leonards, NSW 2065



Apartment For Sale

Sunday, 23 June 2024

1206/486 Pacific Highway, St Leonards, NSW 2065

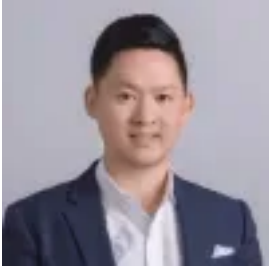
Bedrooms: 2

Bathrooms: 2

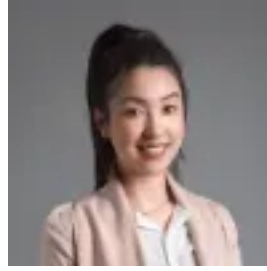
Parkings: 1

Area: 89 m2

Type: Apartment



Jeffrey Li
0298848228



Faye Dai
0298848228

Contact Agent

Discover the mesmerizing beauty of Sydney Harbour and the CBD from this beautiful apartment within 'St Leonards Square' complex. Embrace sophistication with its expansive floor-to-ceiling windows, flexible layout, and captivating views of the harbor and beyond. Enjoy unparalleled convenience with St Leonards train station just a brief 300-meter walk away, granting easy access to premier healthcare, educational, retail, and dining options. Seamless connectivity is ensured with the upcoming Crows Nest Metro station just 150 meters away, offering swift and frequent trips to the CBD.

Key Features:- Bedrooms with built-in wardrobes for added convenience- Spacious open-plan living and dining area with lofty ceiling height- Modern island kitchen featuring stone benchtops and premium Miele appliances- Lavish bathrooms with ample storage, including a bathtub in the ensuite- Internal laundry complete with dryer for added convenience- Secure car space and 2 storage cages- Ducted air conditioning, video intercom, and NBN connectivity for modern living- Access to pool, spa, sauna, steam room, and outdoor terrace for residents- Additional amenities include a Gym and concierge facility at St Leonards Square

Exclusive resident amenities on Level 2 feature a Music Studio, Cinema room, Function and Games Room, Meeting Rooms, Dining Room, kitchen, and an outdoor landscaped area. On Level 14, residents can enjoy exclusive recreation facilities with breathtaking Sydney Harbour views, including a spa, lap pool, steam room, yoga studio, gymnasium, and a lounge/entertaining terrace with BBQ area. Visitor parking and 18 electronic car charging bays.