

**1301/38 Albert Road, South Melbourne, Vic 3205**

**Apartment For Sale**

Wednesday, 10 July 2024



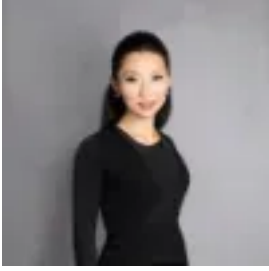
1301/38 Albert Road, South Melbourne, Vic 3205

**Bedrooms: 2**

**Bathrooms: 1**

**Parkings: 1**

**Type: Apartment**



Faye Wang

0390779775

**\$550,000 - \$600,000**

Experience unparalleled urban living in this stunning corner apartment, offering breathtaking views of Port Phillip Bay. Positioned high above the bustling city fringe, this residence is bathed in northwest light, presenting an exquisite skyline view that transforms into a mesmerizing spectacle by night.

**Key Features:**

- **Panoramic Bay Views:** Enjoy unobstructed, stunning views of Port Phillip Bay, perfect for serene mornings and enchanting evenings.
- **Open Plan Living:** Featuring expansive windows opening onto a full-width balcony, ideal for soaking in the bay and city lights.
- **Sleek Stone Kitchen:** Equipped with mirrored splashbacks, ample storage, gas cooking, and a dishwasher.
- **Bright Bedrooms:** Two robed bedrooms separated by a gleaming white bathroom with a walk-in shower.
- **Modern Amenities:** Discreet Euro laundry, RC/AC, wood floors, and car parking for one.
- **Facilities:** Building manager, communal gardens, gym, and rooftop dining with panoramic city and bay views.

**Prime Location:** Centrally located among iconic landmarks:

- **Leisurely Escapes:** The Shrine, The Royal Botanic Gardens, Albert Park Lake, and Fawkner Park.
- **Urban Conveniences:** A short walk to Domain Road or South Melbourne for cafes and restaurants, and easy access to the city.
- **Nearby Attractions:** South Melbourne Market, Botanic Gardens, and the CBD.

Embrace the epitome of city living in one of South Melbourne's most sought-after buildings, where the shimmering bay view meets the vibrant cityscape, ensuring a lifestyle of luxury and comfort.