

**1301/4-6 Second Avenue, Burleigh Heads, Qld 4220**



## **Apartment For Rent**

Monday, 8 July 2024

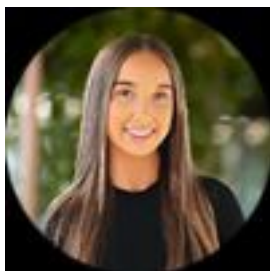
1301/4-6 Second Avenue, Burleigh Heads, Qld 4220

**Bedrooms: 3**

**Bathrooms: 2**

**Parkings: 2**

**Type: Apartment**



Natalie Augustyniak  
1300985852

**\$1750 per week**

In a coveted Burleigh Heads location, steps from the magnificent azure waters of the Pacific Ocean, Grace captures the essence of idyllic beachside living in timeless architectural form. Inspired by their spectacular natural surrounds and Burleigh's world-famous headland, this limited edition of exquisitely curated and crafted residences promises a life of tranquillity and sophistication, graced by fresh ocean breezes and breathtaking views. A singular coastal sanctuary, Grace provides a flawless escape yet is within short reach of the area's superb lifestyle offerings. Once again, our team has raised the bar for ultimate beachside living, in one of the most pristine locations in the world.

**INTERIOR PLANNING**

- Square set ceiling finish.
- Engineered Timber Flooring
- Aluminium framed windows and doors.
- Select large tile to open living, kitchen, dining, bathrooms and laundry.
- Ducted air conditioning throughout.
- Ceiling fans to all bedrooms.

**KITCHEN**

- Smeg stainless steel 60cm gas cooktop, stainless steel Smeg 60cm oven, Smeg microwave and Smeg integrated dishwasher. Ducted rangehood provided.
- Custom kitchens finished in timber look laminate, with finger pull detail, soft close drawers, undermount sink and brushed tapware.
- 40mm reconstituted stone edge detail to island, 20mm reconstituted stone to backbench.
- Feature finger tile to splashbacks.

**BEDROOMS AND WARDROBES**

- Quality carpet with underlay in all bedrooms and robes.
- Built in robes (where shown on plan) with mirror sliding doors, open melamine shelves and hanging rails.
- Walk-in robes (where shown on plan) include hanging rails
- Ceiling fans to all bedrooms.

**BATHROOMS AND ENSUITE**

- Designer brushed accessories, semi-frameless showerscreen.
- Full-height ceramic tiles to bathroom and ensuite.
- Select topmount ceramic basin, brushed tapware and back to wall toilet with dual flush cistern.
- Custom vanity cabinetry with storage finished in quality laminate, reconstituted stone benchtop and mirror above.

**LAUNDRY**

- Laundry cupboard (where shown on plan) with stainless steel laundry tub and brushed finished sink mixer.
- Separate laundry (where shown on plan) includes quality laminate cupboards, reconstituted stone benchtop, stainless steel laundry tub with brushed finished sink mixer.
- Ceramic floor tiles and tiled splashback.
- Front load tumble dryer.

**SECURITY / GENERAL**

- Audio visual intercom system to each residence.
- Secure mailboxes and CCTV security camera system in common areas.

With urban conveniences at your fingertips and recreational amenity on your doorstep, life at Grace will offer an ideal balance of connectivity and community. Burleigh Heads fosters an outdoor lifestyle, whether it's in the surf or at one of the many sporting clubs and facilities. An efficient transport network provides direct links to the Gold Coast's major centres and Brisbane, while a proximity to highly sought-after schools mean world-class education is just minutes away. In addition, Grace is set to significantly benefit from Second Avenue being transformed into a cul-de-sac to make way for the new Burleigh Heads G:Link Light Rail Stop.

Would you like to inspect this property? Please click the blue 'Book an Inspection Time' button to book for an inspection or register your interest.

**\*\* PLEASE ENSURE REGISTRATIONS ARE DONE THROUGH THE BOOK AN INSPECTION BUTTON SO THAT OUR OFFICE CAN NOTIFY YOU OF ANY TIME CHANGES OR CANCELLATIONS \*\***

Disclaimer: Whilst every care is taken in the preparation of the information contained in this marketing, Mosaic Property Management will not be held liable for any errors in typing or information. All interested parties should rely upon their own enquiries in order to determine whether or not this information is in fact accurate.